

NOTES

Contribution of FliC to Epithelial Cell Invasion by Enterohemorrhagic *Escherichia coli* O113:H21[∇]

Shelley N. Luck,¹ Luminita Badea,¹ Vicki Bennett-Wood,²
 Roy Robins-Browne,² and Elizabeth L. Hartland^{1*}

*Australian Bacterial Pathogenesis Program, Department of Microbiology, Monash University, Melbourne, Victoria 3800,¹
 and Australian Bacterial Pathogenesis Program, Department of Microbiology and Immunology, University of
 Melbourne, Melbourne, Victoria 3010,² Australia*

Received 17 March 2006/Returned for modification 26 April 2006/Accepted 24 August 2006

Enterohemorrhagic *Escherichia coli* (EHEC) O113:H21 can invade epithelial cells. In this study, we found that invasion but not adherence was inhibited by anti-FliC_{H21} specific antibodies. In addition, deletion of *fliC_{H21}* from EHEC O113:H21 resulted in an eightfold decrease in invasion that was restored upon transcomplementation with *fliC_{H21}* but not with *fliC_{H16}*. These results suggested that FliC plays an important role in the pathogenesis of infections caused by EHEC O113:H21 by allowing bacteria to penetrate the intestinal epithelium.

Shiga toxin-producing *Escherichia coli* (STEC) strains associated with hemorrhagic colitis or the hemolytic-uremic syndrome (HUS) in humans are commonly referred to as enterohemorrhagic *E. coli* (EHEC) (32). Most EHEC strains carry the locus for enterocyte effacement (LEE), which is essential for intestinal colonization (12, 14, 19, 27, 34). Nevertheless, strains of EHEC that do not carry LEE are regularly isolated from patients with severe disease, and these isolates have been termed *eae*- or LEE-negative EHEC or STEC (2, 4, 11, 13, 17, 20, 24, 25). We have shown previously that clinical isolates of LEE-negative EHEC have the ability to invade Chinese Hamster Ovary (CHO-K1) cells and the human colonic cell lines HCT-8 and Caco-2 (21). We speculate that this atypical subgroup of EHEC may use a mechanism of host cell invasion to colonize the intestinal mucosa.

Recently, Rogers et al. used the streptomycin-treated mouse model to show that LEE-negative EHEC O113:H21 strain 98NK2 was closely associated with the colonic mucosa during infection (30). In addition, bacteria were observed to penetrate the gut epithelium, and this close interaction was dependent on *fliC*. Although there was no difference in the fecal shedding of wild-type 98NK2 and a 98NK2Δ*fliC* mutant, *fliC* was required for full lethality in mice mediated by Shiga toxin, suggesting that a close interaction of 98NK2 with the intestinal mucosa was important for virulence. In the present study, we have extended these findings to examine the contribution of FliC to invasion of HCT-8 epithelial cells by EHEC O113:H21.

FliC_{H21}-mediated invasion of HCT-8 cells. Previous work has shown that FliC is more highly expressed at temperatures

below 37°C in the invasive pathogens *Yersinia enterocolitica* and *Listeria monocytogenes* (3, 9, 18). We therefore examined FliC_{H21} expression by wild-type STEC O113:H21 strain EH41 at two different growth temperatures. EH41 is a clinical isolate that has been described previously (10). Bacteria were grown in Luria-Bertani (LB) broth to the same optical density (i.e., an optical density at 600 nm of 0.8 [mid-log phase]) at 25 and 37°C, and whole-cell lysates were analyzed by immunoblotting with anti-H21 antibodies (Statens Serum Institut, Copenhagen, Denmark). The results showed that FliC_{H21} production by EH41 was more abundant at 25°C than at 37°C (Fig. 1A). To determine whether increased expression of FliC_{H21} correlated with increased invasion, we performed invasion assays with EH41 grown in LB broth overnight at 25°C and at 37°C as described previously (21, 28). Briefly, washed semiconfluent cell monolayers were infected in the presence of 0.5% mannose with ca. 10⁷ CFU of different bacterial strains. After incubation for 3 h, some cell monolayers were washed three times with phosphate-buffered saline (PBS) and lysed in 0.1% (wt/vol) digitonin. After lysis, bacteria were resuspended in LB broth and quantified by plating serial dilutions. This represented the total adherent bacteria. To obtain the number of intracellular bacteria, a second set of infected wells was washed three times and incubated with 100 μg of gentamicin/ml for 60 min. After this incubation period, cells were washed three times with PBS, lysed with 0.1% (wt/vol) digitonin, and resuspended in LB broth for quantification by serial dilution. Assays were carried out in duplicate, and the results represented data obtained from at least three independent experiments. Invasion was expressed as the percentage of total adherent bacteria that resisted killing by gentamicin (mean ± the standard deviation), and adherence was expressed as the percentage of cell-associated bacteria from the original inoculum (mean ± the standard deviation) as described previously (21, 28). Differences in invasion and adherence were assessed for signifi-

* Corresponding author. Mailing address: Department of Microbiology, Monash University, Clayton 3800, Victoria, Australia. Phone: (61) 3 9905 4323. Fax: (61) 3 9905 4811. E-mail: Liz.Hartland@med.monash.edu.au.

[∇] Published ahead of print on 18 September 2006.

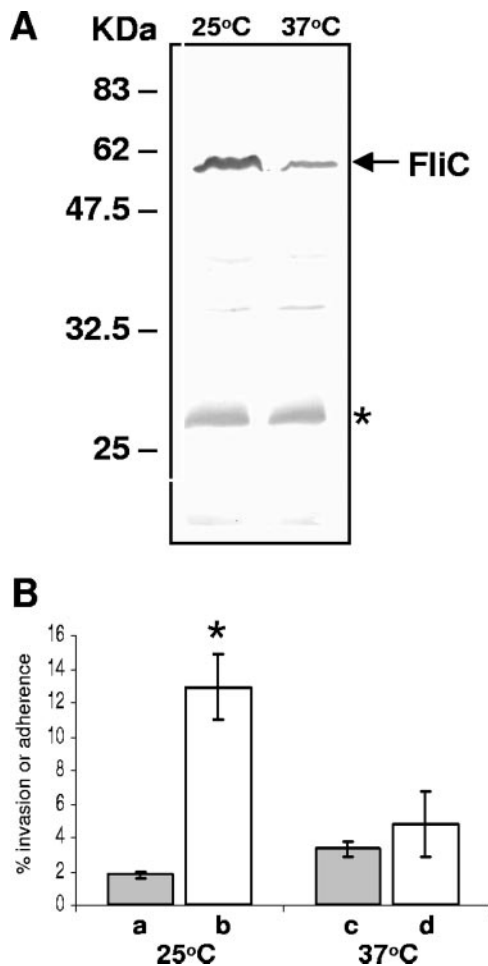


FIG. 1. (A) Immunoblot of bacterial whole-cell lysates derived from EHEC O113:H21 strain EH41 grown at 25°C or 37°C and detected with anti-H21 FliC antibodies. The asterisk indicates a nonspecific *E. coli* band that serves as a protein loading control. (B) Adherence (columns a and c) and invasion (columns b and d) of EHEC O113:H21 grown overnight at 25 or 37°C to HCT-8 cells. The results are expressed as the percentage of cell-associated bacteria that resisted killing by gentamicin (invasion) or the percentage of cell-associated bacteria from the original inoculum (adherence) and are the means \pm the standard deviation of at least three independent experiments in duplicate wells. The asterisk indicates significantly more than same strain grown overnight at 37°C ($P = 0.0072$, unpaired, two-tailed t test).

cance by using an unpaired, two-tailed t test. The results showed that EH41 grown at 25°C was significantly more invasive for HCT-8 cells than bacteria grown at 37°C (Fig. 1B). In contrast, adherence to HCT-8 cells by EH41 was not affected by growth at a lower temperature (Fig. 1B). Invasion was therefore regulated by temperature, and this correlated with the production of FliC. Since we calculated invasion as the percentage of cell-associated bacteria that were internalized, only bacteria already in contact with host cells were counted. In addition, there was no difference in bacterial adherence, suggesting that these results were independent of FliC-mediated motility.

The production of invasins at temperatures below 37°C has been described previously for the enteropathogenic *Yersinia* species and *Bartonella bacilliformis* (5, 23, 26). Although tem-

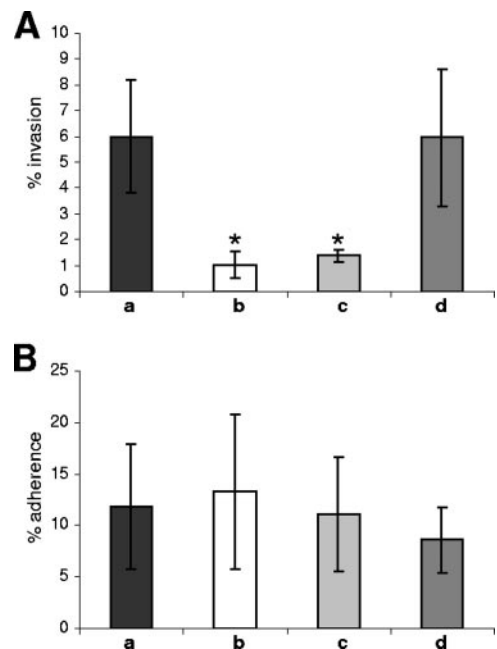


FIG. 2. Invasion and adherence of EHEC O113:H21 to HCT-8 cells after preincubation with anti-FliC antibodies. (A) Invasion assay performed with no preincubation (control) (a), preincubation with anti-H21 diluted 1:500 (b), preincubation with anti-H21 diluted 1:1,000 (c), and preincubation with anti-H6 diluted 1:500 (d). The results are expressed as the percentage of cell-associated bacteria that resisted killing by gentamicin (invasion) and are the means \pm the standard deviations of at least three independent experiments in duplicate wells. The asterisk indicates significantly lower than control ($P < 0.02$, unpaired two-tailed t test). (B) Adherence assay performed with no preincubation (control) (a), preincubation with anti-H21 diluted 1:500 (b), preincubation with anti-H21 diluted 1:1,000 (c), and preincubation with anti-H6 diluted 1:500 (d). The results are expressed as the percentage of cell-associated bacteria from the original inoculum (adherence) and are the means \pm the standard deviations of at least three independent experiments in duplicate wells.

perature represses invasins expression in vitro, this may be overcome by exposing *Y. enterocolitica* or *Y. pseudotuberculosis* to conditions simulating pH and osmotic conditions in the gut (23, 26). The observed increase in production of FliC at 25°C could either reflect environment-to-host transmission of EHEC O113:H21 as for *B. bacilliformis* or, alternatively, temperature repression of FliC production in vitro may be overcome in vivo by changes in osmolarity and pH. Previous work on flagellin from enteropathogenic *E. coli* (EPEC) O127:H6 has suggested that an epithelial-cell-derived factor stimulates FliC production during infection of tissue culture cells (16). Therefore, although we used an ambient temperature as a trigger to increase invasion in vitro, it is possible that a separate unknown host signal is responsible for increasing flagellin expression in the gut.

To determine whether we could interfere with epithelial cell invasion with FliC-specific antibodies, we performed invasion assays in the presence of anti-H21 monovalent antiserum and anti-H6 as a control (Statens Serum Institut). In this experiment, wild-type STEC O113:H21 strain EH41 was grown at 25°C overnight, and bacteria were then incubated with antisera diluted 1:500 or 1:1,000 in PBS for 15 min at room temperature

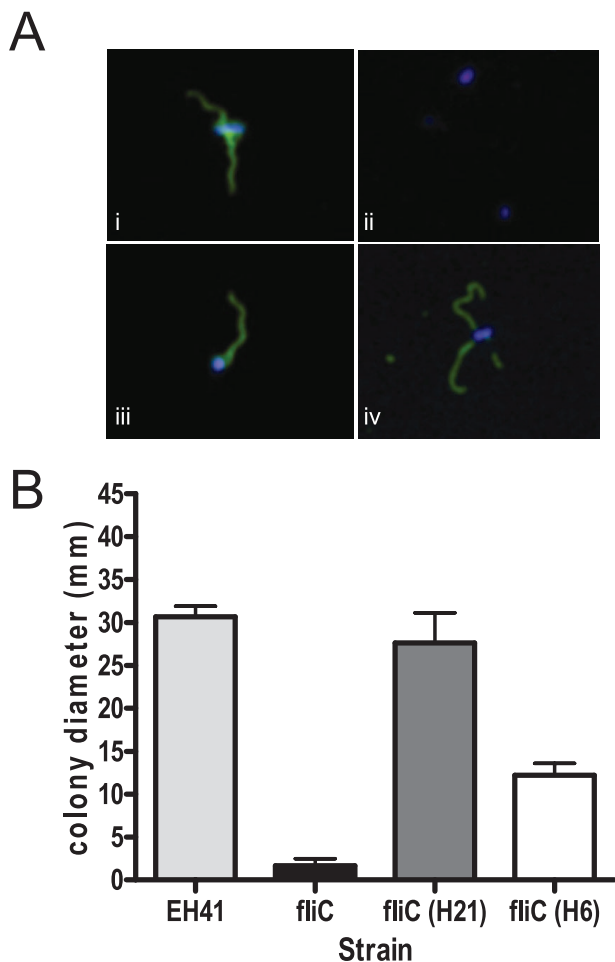


FIG. 3. (A) Immunofluorescence microscopy of wild-type EH41 incubated with anti-H21 antibodies (i), EH41*fliC::cat* incubated with anti-H21 antibodies (ii), EH41*fliC::cat* (pTrc:*fliC_{H21}*) incubated with anti-H21 antibodies (iii), and EH41*fliC::cat* (pTrc:*fliC_{H6}*) incubated with anti-H6 antibodies (iv). All fields were also incubated with anti-rabbit fluorescein isothiocyanate-conjugated secondary antibodies, and bacterial nucleic acid was stained with DAPI (4',6'-diamidino-2-phenylindole). (B) Motility of wild-type EH41, EH41*fliC::cat*, EH41*fliC::cat* (pTrc:*fliC_{H21}*), and EH41*fliC::cat* (pTrc:*fliC_{H6}*) in 0.2% semisolid LB agar. Bacteria were incubated overnight at 25°C, after which colony diameter was measured. The results are expressed as the mean of triplicate colonies from three independent experiments.

prior to inoculation of HCT-8 cell monolayers. Although preincubation of EH41 with anti-H21 antibodies significantly reduced the level of invasion, preincubation with anti-H6 antibodies had no effect on EH41 uptake into HCT-8 cells (Fig. 2A). Neither anti-H21 nor anti-H6 antibodies had any effect on EH41 adherence to HCT-8 cells (Fig. 2B). No reactivity was observed between the Δ *fliC* mutant and anti-H21 antibodies (Fig. 3) or anti-H6 antibodies (data not shown), indicating that the inhibition of invasion was not due to nonspecific serum factors. These results supported the hypothesis that FliC_{H21} was necessary for full invasion of EHEC O113:H21 into epithelial cells.

To test the contribution of *fliC_{H21}* to epithelial cell invasion, we examined the ability of EH41 and an isogenic *fliC* mutant to invade HCT-8 cells. EH41*fliC::cat* was constructed from EH41

by interruption of *fliC* with a chloramphenicol resistance (*cat*) gene derived from Tn4451 (1). *fliC_{H21}* was amplified by using the primers 5'-TCTCAGTCTTCTCTGAGCTC-3' and 5'-AT ATGGTACCTTTTCGAGCGGGTTGGTGG-3' and cloned into pCR-Script digested with KpnI and SmaI. The *cat* cassette was ligated into the internal PstI/EcoRI sites of *fliC*, and the mutation was amplified by using the primers described above and introduced into EH41 using the red recombinase system (7). The resulting mutant was nonmotile in semisolid agar (Fig. 3). EH41*fliC::cat* was complemented in *trans* by *fliC_{H21}* encoding H21 flagellin inserted into the BamHI/SalI sites of pTrc99A. *fliC_{H21}* was amplified with the primers 5'-AAGGATCCCGA TACAAGGGGTACGGTG-3' and 5'-AAAGTCGACCACG ATAAACAGCCCTGCG-3'. In addition, EH41*fliC::cat* was complemented in *trans* with *fliC_{H6}* encoding H6 flagellin derived from EPEC strain 2348/69 inserted into the NcoI/BamHI sites in pTrc99A. *fliC_{H6}* was amplified with the primers 5'-CA TGCCATGGCACAAGTCATTAATACC-3' and 5'-CGCGG ATCCTTAACCCTGCAGCAGAGAC-3'. Complemented strains were tested for expression of FliC by immunofluorescence with anti-H21 or anti-H6 antibodies and then assessed for motility. As expected, EH41*fliC::cat* (pTrc:*fliC_{H21}*) and EH41*fliC::cat* (pTrc:*fliC_{H6}*) were motile and expressed FliC_{H21} and FliC_{H6}, respectively (Fig. 3). EH41, EH41*fliC::cat*, EH41*fliC::cat* (pTrc:*fliC_{H21}*), and EH41*fliC::cat* (pTrc:*fliC_{H6}*) were then grown overnight at 25°C and tested for their ability to adhere to and invade HCT-8 cells. The results for the mutant and complemented strains were expressed as a percentage of wild-type EH41 invasion and adherence (Table 1). The data showed that deletion of *fliC* from EH41 resulted in an eightfold decrease in invasion of HCT-8 cells (Table 1). Complementation of EH41 Δ *fliC* with pTrc:*fliC_{H21}* partially restored the ability of EH41*fliC::cat* to invade HCT-8 cells, whereas complementation with pTrc:*fliC_{H6}* had no effect on EH41*fliC::cat* invasion (Table 1). Since complementation with either *fliC_{H6}* or *fliC_{H21}* restored the production of flagella and motility (Fig. 3), this suggested that invasion was directly related to flagellar type and not related to the motility of the strain. In addition, the deletion of *fliC* from EH41 had no effect on adherence to HCT-8 cells, and the apparent difference in adherence be-

TABLE 1. Relative invasion of and adherence to HCT-8 cells of derivatives of EHEC O113:H21 strains EH41 and 98NK2

Strain	% (mean \pm SD) of wild-type:	
	Invasion ^a	Adherence ^b
Derivatives of EH41		
EH41	100 \pm 82.6	100 \pm 60.7
EH41 <i>fliC::cat</i>	12.63 \pm 5.1*	121.7 \pm 29.2
EH41 <i>fliC::cat</i> (pTrc: <i>fliC_{H21}</i>)	43.38 \pm 7.8	208.5 \pm 122.2
EH41 <i>fliC::cat</i> (pTrc: <i>fliC_{H6}</i>)	15.42 \pm 3.4*	120.6 \pm 26.5
Derivatives of 98NK2		
98NK2	100 \pm 43.4	100 \pm 30.9
98NK2 Δ <i>fliC</i>	17.4 \pm 7.0†	47.9 \pm 10.7

^a Results are expressed as a percentage of wild-type EH41 invasion (mean \pm standard deviation of at least three independent experiments in duplicate wells). *, Significantly less than EH41*fliC::cat* (pTrc:*fliC_{H21}*) ($P < 0.005$; unpaired, two-tailed t test); †, significantly less than 98NK2 ($P < 0.05$; unpaired, two-tailed t test).

^b Results are expressed as a percentage of wild-type EH41 adherence (mean \pm standard deviation of at least three independent experiments in duplicate wells).

```

O127:H6      MAQVINTNSLSLITQNNINKNQSALSSSIERLSSGLRINSKDDAAGQAIANRFTSNIKG
O142:H6      -----KNQSALSSSIERLSSGLRINSKDDAAGQAIANRFTSNIKG
O55:H6      -----NNINKNQSALSSSIERLSSGLRINSKDDAAGQAIANRFTSNIKG
O113:H21    MAQVINTNSLSLLTQNNLNKSSQSSLSAIERLSSGLRINSKDDAAGQAIANRFTANIKG
O8:H21      -----NKSQSSLSAIERLSSGLRINSKDDAAGQAIANRFTANIKG
O91:H21     ----INTNSLSLLTQNNLNKSSQSSLSAIERLSSGLRINSKDDAAGQAIANRFTANIKG

O127:H6      LTQAARNANDGISVAQTTEGALSEINNNLQRIRELTVQASTGTNSDSDLDSIQDEIKSRL
O142:H6      LTQAARNANDGISVAQTTEGALSEINNNLQRIRELTVQASTGTNSDSDLDSIQDEIKSRL
O55:H6      LTQAARNANDGISVAQTTEGALSEINNNLQRIRELTVQASTGTNSDSDLDSIQDEIKSRL
O113:H21    LTQASRNANDGISVAQTTEGALNEINNNLQRIRELSVQATNGTNSDSDLSSIQAEITQRL
O8:H21      LTQASRNANDGISVAQTTEGALNEINNNLQRIRELSVQATNGTNSDSDLSSIQAEITQRL
O91:H21     LTQASRNANDGISVAQTTEGALNEINNNLQRIRELSVQATNGTNSDSDLSSIQAEITQRL

O127:H6      DEIDRVSGQTQFNGVNVLAKDGSMKIQVGANDGQTIITIDLKKIDSDTLGLNGFVNGKGE
O142:H6      DEIDRVSGQTQFNGVNVLAKDGSMKIQVGANDGQTIITIELKKIDSDTLGLNGFVNGKGE
O55:H6      DEIDRVSGQTQFNGVNVLAKDGSMKIQVGANDGQTIITIDLKKIDSDTLGLNGFVNGKGE
O113:H21    EEIDRVSEQTQFNGVKVLAENNEMKIQVGANDGETITINLAKIDAKTLGLDGFNIDGAQK
O8:H21      EEIDRVSEQTQFNGVKVLAENNEMKIQVGANDGETITINLAKIDAKTLGLDGFNIDGAQK
O91:H21     EEIDRVSEQTQFNGVKVLAENNEMKIQVGANDGETITINLAKIDAKTLGLDGFNIDGAQK

O127:H6      TANTAATLKDMSGFTAATAAPGGTVGVTQYTDKSAVASSVDILNAVAGADGNKVTTSDVVG
O142:H6      TANTAATLKDMSGFTAATAAPGGTVGVTQYTDKSAVASSVDILNAVAGADGNKVTTSDVVG
O55:H6      TANTAATLKDMSGFTAATAAPGGTVGVTQYTDKSAVASSVNLNAVAGADGNKVTTSDVVG
O113:H21    ATGSDLISKFKATGTDNYQINGTDNYTVNVDSGVVQDKDGKQVYVSTADG-----
O8:H21      ATGSDLISKFKATGTDNYQINGTDNYTVNVDSGVVQDKDGKQVYVSTADG-----
O91:H21     ATGSDLISKFKATGTDNYQINGTDNYTVNVDSGVVQDKDGKQVYVSTADG-----

O127:H6      FGTAAAAVTYTYNKDNTNSYSAASDDISSANLAAFLNPQARDTTKATVTTIGGKDQDVNIDK
O142:H6      FGTAAAAVTYTYNKDNTNSYSAASDDISSANLAAFLNPQARDTTKATVTTIGGKDQDVNIDK
O55:H6      FGTAAAAVTYTYNKDNTNSYSAASDDISSANLAAFLNPQARDTTKATVTTIGGKDQDVNIDK
O113:H21    --SLTTSSDTQFKIDATKLAVAAKDLAQGNKI VYEGIEFTNTGTVAIDAKG-----
O8:H21      --SLTTSSDTQFKIDATKLAVAAKDLAQGNKI VYEGIEFTNTGTVAIDAKG-----
O91:H21     --SLTTSSDTQFKIDATKLAVAAKDLAQGNKI VYEGIEFTNTGTVAIDAKG-----

O127:H6      SGNLTAADDGAVLYMDATGNLTKNAGGDTQATLAKVATATGAKAATIQTDKGTFTSDGT
O142:H6      SGNLTAADDGAVLYMDATGNLTKNAGGDTQATLAKVATATGAKAATIQTDKGTFTSDGT
O55:H6      SGNLTAADDGAVLYMDATGNLTKNAGGDTQATLAKVATATGAKAATIQTDKGTFTSDGT
O113:H21    NGKLTANVDGKAVEFTISGSTDTSGTSATVAPTALYKNSAGQLTATKVENKAATLSD--
O8:H21      NGKLTANVDGKAVEFTISGSTDTSGTSATVAPTALYKNSAGQLTATKVENKAATLSD--
O91:H21     NGKLTANVDGKAVEFTISGSTDTSGTSATVAPTALYKNSAGQLTATKVENKAATLSD--

O127:H6      AFDGASMSIDANTFANAVKNDTYTATVGAKTYSVTTGSAAADTAYMSNGVLSDTPTPTYYA
O142:H6      AFDGASMSIDANTFANAVKNDTYTATVGAKTYSVTTGSAAADTAYMSNGVLSDTPTPTYYA
O55:H6      AFDGASMSIDANTFANAVKNDTYTATVGAKTYSVTTGSAAADTAYMSNGVLSDTPTPTYYA
O113:H21    -----LDLNAAKKTGSTLVVNGATYDVS-----ADGKTI TETASGNNKVMYLS
O8:H21      -----LDLNAAKKTGSTLVVNGATYDVS-----ADGKTI TETASGNNKVMYLS
O91:H21     -----LDLNAAKKTGSTLVVNGATYDVS-----ADGKTI TETASGNNKVMYLS

O127:H6      QADGSIITTEDAAAGKLVYKGS DGKLTDTT SKAESTSDPLAALDDAISQIDKFRSSLGA
O142:H6      QADGSIITTEDAAAGKLVYKGS DGKLTDTT SKAESTSDPLAALDDAISQIDKFRSSLGA
O55:H6      QADGSIITTEDAAAGKLVYKGS DGKLTDTT SKAESTSDPLAALDDAISQIDKFRSSLGA
O113:H21    KSEG-----GSPILVNE DAAKSLQSTTNPLETIDKALAKVDNLRSDLGA
O8:H21      KSEG-----GSPILVNE DAAKSLQSTTNPLETIDKALAKVDNLRSDLGA
O91:H21     KSEG-----GSPILVNE DAAKSLQSTTNPLETIDKALAKVDNLRSDLGA

O127:H6      VQNRLDSAVTNLNNTTNLSAQSR IQDADYATEVSNMSKAQIIQQAAGNSVLAKANQVPQ
O142:H6      VQNRLDSAVTNLNNTTNLSAQSR IQDADYATEVSNMSKAQIIQQA-----
O55:H6      VQNRLDSAVTNLNNTTNLSAQSR IQDADYATEVSNMSKAQIIQQAAGNSVLAKANQV--
O113:H21    VQNRFDSAITNLGNTVNNLSSARSRIEDADYATEVSNMSRAQIIQQAQTSVLAQANQTTQ
O8:H21      VQNRFDSAITNLGNTVNNLSSARSRIEDADYATEVSNMSRAQIIQQAQTSVLAQ-----
O91:H21     VQNRFDSAITNLGNTVNNLSSARSRIEDADYATEVSNMSRAQIIQQAQTSVLAQANQTTQ

O127:H6      QVLSLLQG
O142:H6      -----
O55:H6      -----
O113:H21    NVLSLLR-
O8:H21      -----
O91:H21     NVLS----

```

FIG. 4. CLUSTAL W alignment of FliC proteins from *E. coli* O127:H6 (Scaffold57_cons_ORF_36 from EPEC E2348/69 genome sequence at www.sanger.ac.uk/Projects/Escherichia_Shigella), *E. coli* O142:H6 (AAD28526), *E. coli* O55:H6 (AAD28519), *E. coli* O113:H21 (DQ862122), *E. coli* O8:H21 (AAP13312), and *E. coli* O91:H21 (ABE69176). Shading indicates shared amino acid sequence identity and similarity.

tween EH41 and EH41*fliC::cat* (pTrc:*fliC_{H21}*) was not significant (Table 1, $P = 0.29$, unpaired two-tailed t test). FliC_{H21} and FliC_{H6} share 48.6% amino acid sequence identity, and an alignment between the H6 and H21 flagellins from several organisms showed that this homology occurs in the N- and C-terminal regions of the proteins, whereas the middle region is quite divergent (Fig. 4). We assume that this amino acid sequence variation is responsible for the observed differences in phenotype between the two flagellin types.

To ensure that FliC_{H21} -mediated invasion was not strain specific, another clinical isolate of EHEC O113:H21, 98NK2, and its isogenic *fliC* mutant were grown overnight at 25°C and assessed for their ability to invade HCT-8 cells. EHEC O113:H21 strains 98NK2 and 98NK2 Δ *fliC* have been described previously (29, 30). The results reflected those obtained for EH41 and showed that there was a 5.8-fold reduction in the ability of a 98NK2 Δ *fliC* mutant to invade HCT-8 cells compared to wild-type 98NK2 (Table 1). Although there was also an apparent decrease in adherence of 98NK2 Δ *fliC* to HCT-8 cells, this was not significant (Table 1, $P = 0.06$, unpaired two-tailed t test).

Concluding remarks. In the absence of the LEE pathogenicity island, the mechanisms by which LEE-negative EHEC colonize the gut are unknown. Recently, we reported that clinical isolates of LEE-negative EHEC, in particular strains of EHEC O113:H21, were invasive for epithelial cells (21), and we speculated that host cell invasion was important for virulence and colonization of the host intestine. Recently, Rogers et al. showed that *fliC_{H21}* encoding flagellin of EHEC O113:H21 was necessary for lethality in a streptomycin-treated mouse model of disease (30). This role in virulence was not associated with the ability of FliC_{H21} to stimulate the production of interleukin-8 and recruit polymorphonuclear leukocytes to the intestinal epithelium (29, 30). Instead, FliC appeared to contribute to the ability of EHEC O113:H21 to associate with and penetrate the gut epithelium of streptomycin-treated mice.

Flagellin has been implicated in the invasion of host cells by several pathogens, including *L. monocytogenes*, *Legionella pneumophila*, and *Burkholderia cepacia* (8, 9, 33). In *L. monocytogenes*, which also invades human colonic cells, deletion of the gene encoding flagellin, *flaA*, resulted in an ~4-fold reduction in invasion of Caco-2 cells (9). Flagellin is also an important factor in host-pathogen interactions in organisms more closely related to EHEC O113:H21 such as *Salmonella enterica* serovar Typhimurium, EHEC O157:H7, and EPEC. A recent study of *fliC* expression in serovar Typhimurium showed that *fliC* was transcribed by bacteria in Peyer's patches but not in the mesenteric lymph nodes or spleen, indicating that flagellin may contribute to early stages of host infection (6). Serovar Typhimurium can also translocate FliC across the intestinal epithelium in SPI-1-induced vesicles, where it stimulates a potent inflammatory response via Toll-like receptor 5 (TLR5) signaling (15). Proinflammatory chemokine production is also upregulated by FliC through TLR5 signaling during EHEC O157:H7 and EPEC O127:H6 infection of intestinal tissue (22, 31, 35). In addition to its involvement in inflammation, EPEC O127:H6 flagellin contributes to the adherence of bacteria to epithelial cells (16). Although all of these effects can be attributed to the presence of FliC , they do not rely on bacterial motility. Therefore, flagellin may play a role in vivo by vari-

ously promoting motility in the gut, stimulating host inflammatory pathways and/or by promoting a direct host-pathogen interaction.

In the present study, we found that the inactivation of *fliC* encoding flagellin in EHEC O113:H21 strain EH41 had no effect on bacterial adherence to HCT-8 cells, which confirmed observations made by Rogers et al. using strain 98NK2 (30). In contrast, however, the deletion of *fliC* in both EH41 and 98NK2 strains of EHEC O113:H21 resulted in a significant reduction in invasion of HCT-8 cells. This invasion defect was complemented by *fliC_{H21}* but not by *fliC_{H6}*. Furthermore, we showed that invasion but not adherence could be inhibited by anti-H21 antibodies but not anti-H6 antibodies, providing further evidence that FliC_{H21} plays a specific role in the interaction of EHEC O113:H21 with host cells. Overall, these results strongly suggest that FliC_{H21} contributes to the pathogenesis of EHEC O113:H21 infections by promoting invasion of the intestinal epithelium.

We are grateful to Adrienne Paton for providing STEC O113:H21 98NK2 and 98NK2 Δ *fliC*.

This study was supported by funding from the Australian National Health and Medical Research Council, the Australian Research Council, and Monash University.

REFERENCES

- Bannam, T. L., P. K. Crellin, and J. I. Rood. 1995. Molecular genetics of the chloramphenicol-resistance transposon Tn4451 from *Clostridium perfringens*: the TnpX site-specific recombinase excises a circular transposon molecule. *Mol. Microbiol.* **16**:535–551.
- Bennett-Wood, V. R., J. Russell, A. M. Bordun, P. D. Johnson, and R. M. Robins-Browne. 2004. Detection of enterohaemorrhagic *Escherichia coli* in patients attending hospital in Melbourne, Australia. *Pathology* **36**:345–351.
- Bigot, A., H. Pagniez, E. Botton, C. Frehel, I. Dubail, C. Jacquet, A. Charbit, and C. Raynaud. 2005. Role of FliF and FliI of *Listeria monocytogenes* in flagellar assembly and pathogenicity. *Infect. Immun.* **73**:5530–5539.
- Bonnet, R., B. Souweine, G. Gauthier, C. Rich, V. Livrelli, J. Sirot, B. Joly, and C. Forestier. 1998. Non-O157:H7 Stx2-producing *Escherichia coli* strains associated with sporadic cases of hemolytic-uremic syndrome in adults. *J. Clin. Microbiol.* **36**:1777–1780.
- Coleman, S. A., and M. F. Minnick. 2003. Differential expression of the invasion-associated locus B (*ialB*) gene of *Bartonella bacilliformis* in response to environmental cues. *Microb. Pathog.* **34**:179–186.
- Cummings, L. A., W. D. Wilkerson, T. Bergsbaken, and B. T. Cookson. 2006. In vivo, *fliC* expression by *Salmonella enterica* serovar Typhimurium is heterogeneous, regulated by ClpX , and anatomically restricted. *Mol. Microbiol.* **61**:795–809.
- Datsenko, K. A., and B. L. Wanner. 2000. One-step inactivation of chromosomal genes in *Escherichia coli* K-12 using PCR products. *Proc. Natl. Acad. Sci. USA* **97**:6640–6645.
- Dietrich, C., K. Heuner, B. C. Brand, J. Hacker, and M. Steinert. 2001. Flagellum of *Legionella pneumophila* positively affects the early phase of infection of eukaryotic host cells. *Infect. Immun.* **69**:2116–2122.
- Dons, L., E. Eriksson, Y. Jin, M. E. Rottenberg, K. Kristensson, C. N. Larsen, J. Bresciani, and J. E. Olsen. 2004. Role of flagellin and the two-component CheA/CheY system of *Listeria monocytogenes* in host cell invasion and virulence. *Infect. Immun.* **72**:3237–3244.
- Doughty, S., J. Sloan, V. Bennett-Wood, M. Robertson, R. M. Robins-Browne, and E. L. Hartland. 2002. Identification of a novel fimbrial gene cluster related to long polar fimbriae in locus of enterocyte effacement-negative strains of enterohemorrhagic *Escherichia coli*. *Infect. Immun.* **70**:6761–6769.
- Dytoc, M. T., A. Ismaili, D. J. Philpott, R. Soni, J. L. Brunton, and P. M. Sherman. 1994. Distinct binding properties of *eaeA*-negative verocytotoxin-producing *Escherichia coli* of serotype O113:H21. *Infect. Immun.* **62**:3494–3505.
- Dziva, F., P. M. van Diemen, M. P. Stevens, A. J. Smith, and T. S. Wallis. 2004. Identification of *Escherichia coli* O157: H7 genes influencing colonization of the bovine gastrointestinal tract using signature-tagged mutagenesis. *Microbiology* **150**:3631–3645.
- Elliott, E. J., R. M. Robins-Browne, E. V. O'Loughlin, V. Bennett-Wood, J. Bourke, P. Henning, G. G. Hogg, J. Knight, H. Powell, and D. Redmond. 2001. Nationwide study of hemolytic uremic syndrome: clinical, microbiological, and epidemiological features. *Arch. Dis. Child* **85**:125–131.

14. Frankel, G., A. D. Phillips, I. Rosenshine, G. Dougan, J. B. Kaper, and S. Knutton. 1998. Enteropathogenic and enterohaemorrhagic *Escherichia coli*: more subversive elements. *Mol. Microbiol.* **30**:911–921.
15. Gewirtz, A. T., P. O. Simon, Jr., C. K. Schmitt, L. J. Taylor, C. H. Hagedorn, A. D. O'Brien, A. S. Neish, and J. L. Madara. 2001. *Salmonella typhimurium* translocates flagellin across intestinal epithelia, inducing a proinflammatory response. *J. Clin. Investig.* **107**:99–109.
16. Giron, J. A., A. G. Torres, E. Freer, and J. B. Kaper. 2002. The flagella of enteropathogenic *Escherichia coli* mediate adherence to epithelial cells. *Mol. Microbiol.* **44**:361–379.
17. Hogan, M. C., J. M. Gloor, J. R. Uhl, F. R. Cockerill, and D. S. Milliner. 2001. Two cases of non-O157:H7 *Escherichia coli* hemolytic-uremic syndrome caused by urinary tract infection. *Am. J. Kidney Dis.* **38**:E22.
18. Kapatral, V., J. W. Olson, J. C. Pepe, V. L. Miller, and S. A. Minnich. 1996. Temperature-dependent regulation of *Yersinia enterocolitica* class III flagellar genes. *Mol. Microbiol.* **19**:1061–1071.
19. Kaper, J. B. 1998. Enterohemorrhagic *Escherichia coli*. *Curr. Opin. Microbiol.* **1**:103–108.
20. Karmali, M. A., M. Petric, C. Lim, P. C. Fleming, G. S. Arbus, and H. Lior. 1985. The association between idiopathic hemolytic-uremic syndrome and infection by verotoxin-producing *Escherichia coli*. *J. Infect. Dis.* **151**:775–782.
21. Luck, S. N., V. Bennett-Wood, R. Poon, R. M. Robins-Browne, and E. L. Hartland. 2005. Invasion of epithelial cells by locus of enterocyte effacement-negative enterohemorrhagic *Escherichia coli*. *Infect. Immun.* **73**:3063–3071.
22. Miyamoto, Y., M. Iimura, J. B. Kaper, A. G. Torres, and M. F. Kagnoff. 2006. Role of Shiga toxin versus H7 flagellin in enterohaemorrhagic *Escherichia coli* signalling of human colon epithelium in vivo. *Cell Microbiol.* **8**:869–879.
23. Nagel, G., A. Lahrz, and P. Dersch. 2001. Environmental control of invasive expression in *Yersinia pseudotuberculosis* is mediated by regulation of RovA, a transcriptional activator of the SlyA/Hor family. *Mol. Microbiol.* **41**:1249–1269.
24. Paton, A. W., M. C. Woodrow, R. M. Doyle, J. A. Lanser, and J. C. Paton. 1999. Molecular characterization of a Shiga toxinogenic *Escherichia coli* O113:H21 strain lacking *eae* responsible for a cluster of cases of hemolytic-uremic syndrome. *J. Clin. Microbiol.* **37**:3357–3361.
25. Paton, J. C., and A. W. Paton. 1998. Pathogenesis and diagnosis of Shiga toxin-producing *Escherichia coli* infections. *Clin. Microbiol. Rev.* **11**:450–479.
26. Revell, P. A., and V. L. Miller. 2000. A chromosomally encoded regulator is required for expression of the *Yersinia enterocolitica inv* gene and for virulence. *Mol. Microbiol.* **35**:677–685.
27. Ritchie, J. M., and M. K. Waldor. 2005. The locus of enterocyte effacement-encoded effector proteins all promote enterohemorrhagic *Escherichia coli* pathogenicity in infant rabbits. *Infect. Immun.* **73**:1466–1474.
28. Robins-Browne, R. M., and V. Bennett-Wood. 1992. Quantitative assessment of the ability of *Escherichia coli* to invade cultured animal cells. *Microb. Pathog.* **12**:159–164.
29. Rogers, T. J., A. W. Paton, S. R. McColl, and J. C. Paton. 2003. Enhanced CXC chemokine responses of human colonic epithelial cells to locus of enterocyte effacement-negative Shiga-toxinogenic *Escherichia coli*. *Infect. Immun.* **71**:5623–5632.
30. Rogers, T. J., J. C. Paton, H. Wang, U. M. Talbot, and A. W. Paton. 2006. Reduced virulence of an *fliC* mutant of Shiga-toxinogenic *Escherichia coli* O113:H21. *Infect. Immun.* **74**:1962–1966.
31. Sharma, R., S. Tesfay, F. L. Tomson, R. P. Kanteti, V. K. Viswanathan, and G. Hecht. 2006. Balance of bacterial pro- and anti-inflammatory mediators dictates net effect of enteropathogenic *Escherichia coli* on intestinal epithelial cells. *Am. J. Physiol. Gastrointest. Liver Physiol.* **290**:G685–G694.
32. Tarr, P. I., C. A. Gordon, and W. L. Chandler. 2005. Shiga-toxin-producing *Escherichia coli* and haemolytic uraemic syndrome. *Lancet* **365**:1073–1086.
33. Tomich, M., C. A. Herfst, J. W. Golden, and C. D. Mohr. 2002. Role of flagella in host cell invasion by *Burkholderia cepacia*. *Infect. Immun.* **70**:1799–1806.
34. van Diemen, P. M., F. Dziva, M. P. Stevens, and T. S. Wallis. 2005. Identification of enterohemorrhagic *Escherichia coli* O26:H- genes required for intestinal colonization in calves. *Infect. Immun.* **73**:1735–1743.
35. Zhou, X., J. A. Giron, A. G. Torres, J. A. Crawford, E. Negrete, S. N. Vogel, and J. B. Kaper. 2003. Flagellin of enteropathogenic *Escherichia coli* stimulates interleukin-8 production in T84 cells. *Infect. Immun.* **71**:2120–2129.

Editor: J. B. Bliska