

Live Attenuated *Shigella dysenteriae* Type 1 Vaccine Strains Overexpressing Shiga Toxin B Subunit[∇]

Tao Wu, Christen Grassel, Myron M. Levine, and Eileen M. Barry*

University of Maryland, Baltimore, Maryland

Received 16 August 2011/Returned for modification 19 September 2011/Accepted 25 September 2011

Shigella dysenteriae serotype 1 (*S. dysenteriae* 1) is unique among the *Shigella* species and serotypes in the expression of Shiga toxin which contributes to more severe disease sequelae and the ability to cause explosive outbreaks and pandemics. *S. dysenteriae* 1 shares characteristics with other *Shigella* species, including the capability of causing clinical illness with a very low inoculum (10 to 100 CFU) and resistance to multiple antibiotics, underscoring the need for efficacious vaccines and therapeutics. Following the demonstration of the successful attenuating capacity of deletion mutations in the *guaBA* operon in *S. flexneri* 2a vaccine strains in clinical studies, we developed a series of *S. dysenteriae* 1 vaccine candidates containing the fundamental attenuating mutation in *guaBA*. All strains are devoid of Shiga toxin activity by specific deletion of the gene encoding the StxA subunit, which encodes enzymatic activity. The StxB subunit was overexpressed in several derivatives by either plasmid-based constructs or chromosomal manipulation to include a strong promoter. All strains are attenuated for growth *in vitro* in the HeLa cell assay and for plaque formation and were safe in the Serény test and immunogenic in the guinea pigs. Each strain induced robust serum and mucosal anti-*S. dysenteriae* 1 lipopolysaccharide (LPS) responses and protected against wild-type challenge. Two strains engineered to overexpress StxB induced high titers of Shiga toxin neutralizing antibodies. These candidates demonstrate the potential for a live attenuated vaccine to protect against disease caused by *S. dysenteriae* 1 and potentially to protect against the toxic effects of other Shiga toxin 1-expressing pathogens.

Within the genus *Shigella*, four species, including *S. dysenteriae*, *S. flexneri*, *S. sonnei*, and *S. boydii*, cause diarrheal disease and dysentery in humans. It is estimated that more than 160 million cases of shigellosis and 1.1 million deaths occur per year (24). Each species except *S. sonnei* contains multiple serotypes. *S. dysenteriae* serotype 1 (*S. dysenteriae* 1), the first member of the genus *Shigella* identified and named the Shiga bacillus, is unique among all of the *Shigella* in causing the most severe form of disease with the highest case fatality rates (25, 50). Like all *Shigella*, *S. dysenteriae* 1 causes disease following ingestion of contaminated food or water. The extremely low infectious dose (10 to 100 CFU) also facilitates person-to-person transmission (13). *Shigella* bacteria invade the intestinal epithelium through M cells and proceed to spread from cell to cell, causing death and sloughing of contiguously invaded epithelial cells and inducing a potent inflammatory response resulting in the characteristic dysentery syndrome (45). In addition to this series of pathogenic events, only *S. dysenteriae* 1 has the ability to elaborate the potent Shiga toxin that inhibits protein synthesis in eukaryotic cells and that may lead to extraintestinal complications, including hemolytic-uremic syndrome and death (4, 19).

S. dysenteriae 1 has caused explosive epidemics and pandemics in Central America in the 1960s and 1970s and more recently in Africa and Asia (5, 17, 29, 35, 47). Epidemics occur in regions where there is a low background level of immunity and

in situations where there is crowding combined with poor hygiene, such as refugee camps. Under these conditions, *S. dysenteriae* 1 exhibits high attack rates in all age groups. The problem is compounded by the fact that epidemic strains are typically resistant to multiple antibiotics, thus limiting therapeutic options. The development of an *S. dysenteriae* 1 vaccine is a priority for the protection of individuals in less industrialized countries where *S. dysenteriae* 1 exerts its most significant burden and for the protection of the U.S. population which is considered a vulnerable target population if this pathogen were to be used as a biological weapon. Indeed, based on its characteristics of high virulence, low infectious dose, high person-to-person transmissibility, resistance to drug therapy, and the immunological susceptibility of the U.S. population, *S. dysenteriae* 1 was designated the highest priority category B pathogen on the NIAID list of priority pathogens (38).

Epidemiological and experimental evidence suggest that protective immunity to *Shigella* is directed to the O somatic antigen of the *Shigella* lipopolysaccharide (LPS) and is serotype specific (12, 16). Among the various vaccine strategies currently being pursued, live attenuated vaccines hold much promise in engendering serum and mucosal O-antigen-specific protective responses (26, 54). Recent clinical trials with *S. flexneri* 2a live attenuated vaccine strains demonstrate that targeted mutations in the *guaBA* operon, encoding critical enzymes in the guanine nucleotide biosynthetic pathway, markedly attenuated virulence yet preserved immunogenicity in volunteers (22, 23). These studies showed that clinical acceptability was increased with the deletion of genes encoding *Shigella* enterotoxins 1 and 2 (ShET-1 and ShET-2, respectively) from the *guaBA* mutant. Accordingly, we have constructed derivatives of *S. dysenteriae* 1 with deletions in the *stxAB* genes,

* Corresponding author. Mailing address: Center for Vaccine Development, University of Maryland School of Medicine, 685 West Baltimore Street, HSF-2, Room 480, Baltimore, MD 21201. Phone: (410) 706-3702. Fax: (410) 706-6502. E-mail: ebarry@medicine.umd.edu.

[∇] Published ahead of print on 3 October 2011.

TABLE 1. *S. dysenteriae* serotype 1 strains used in these studies

Strain	Genotype
1617.....	Wild type
CVD 1251.....	1617 Δ <i>guaBA</i>
CVD 1254.....	1617 Δ <i>stxAB</i>
CVD 1255.....	1617 Δ <i>guaBA</i> Δ <i>sen</i> Δ <i>stxAB</i>
CVD 1256.....	1617 Δ <i>guaBA</i> Δ <i>sen</i> Δ <i>stxA::mLpp-stxB</i>
CVD 1257.....	1617 Δ <i>guaBA</i> Δ <i>sen</i> Δ <i>stxA::trc-stxB</i>
CVD 1258.....	CVD 1255(pOmpC-StxB)
CVD 1259.....	CVD 1255(pTrc-StxB)

the *guaBA* genes, as well as in *sen*, the gene encoding ShET-2. *In vitro* and *in vivo* preclinical studies demonstrated that these strains were attenuated for virulence compared to the wild type (WT) and safe, immunogenic, and protective in the guinea pig model.

In order to maximize the usefulness of these vaccine strains, we evaluated the overexpression of the Shiga toxin B subunit within the background of the Δ *stxA* Δ *guaBA* Δ *sen* deletion strain. Shiga toxin is composed of a single A subunit that is enzymatically active and five B subunits that form a pentamer which is responsible for target cell binding. While the A subunit must be deleted in a live vaccine strain to completely abolish toxin enzymatic activity, the B subunit has been demonstrated to elicit antibodies that can neutralize toxin activity (1, 6, 8, 27). Here, a series of vaccine candidates were evaluated in the guinea pig model and found to protect against challenge with wild-type *S. dysenteriae* 1 and induce Shiga toxin neutralizing antibody responses.

MATERIALS AND METHODS

Bacterial strains and growth conditions. Table 1 lists the *Shigella* strains used in these studies. *Shigella* strains were grown on tryptic soy agar (TSA) (Becton Dickinson, Sparks, MD) or on animal product-free medium, high-soy (Sigma-Aldrich, St. Louis, MO), Hy-Yeast 412 yeast extract (TEKnova, Hollister, CA) or soytone (AthenaES, Baltimore, MD), with Congo red (0.02% solution) and guanine (0.005%). *Escherichia coli* was grown on Luria-Bertani (LB) agar. Carbenicillin and kanamycin were used at concentrations of 100 μ g/ml and 50 μ g/ml, respectively, where indicated. Growth curve studies were performed using half-LB medium containing 5 g Bacto tryptone, 2.5 g yeast, and 5 g sodium chloride in 1 liter and supplemented with 0.005% guanine where indicated or chloramphenicol (40 μ g/ml).

Molecular genetic techniques. All primers used for PCR were generated at the University of Maryland Biopolymer core facility and are listed in Table 2. Restriction enzymes, ligase, and polymerase were purchased from New England Biolabs (Beverly, MA) and used according to the manufacturers' instructions.

Construction of strain CVD 1251. *S. dysenteriae* 1 strain 1617 was the wild-type (WT) strain used to create all mutant derivative strains. The *guaBA* deletion was introduced by allelic exchange by the method of Noriega et al. for *S. flexneri* 2a (42). Suicide plasmid pFM726a contains regions flanking the *guaBA* genes that result in a 918-bp deletion in the operon following allelic exchange. Plasmid pFM726a is a pSC101-based suicide plasmid with a temperature-sensitive origin of replication and a *sacB* gene for counterselection. Plasmid pFM726a was electroporated into strain 1617. Colonies were selected at 37°C on medium with kanamycin to select for bacteria containing the integrated plasmid. These colonies were next grown on medium with sucrose to select those bacteria that lost the plasmid. The resulting colonies were screened for kanamycin sensitivity and an inability to grow on medium without guanine. The *guaBA* deletion was confirmed by diagnostic PCR and sequencing of the chromosomal region. This strain was named CVD 1251.

Complementation of guanine auxotrophy was tested with pGuaBA, a low-copy-number plasmid containing a minimal fragment with the *guaBA* operon under the control of the lactose promoter (P_{lacZ}). First, a low-copy-number plasmid containing the *lacZ* gene and a multicloning site (MCS) was created. The *lacZ* gene and MCS were amplified from plasmid pGem5Z (Promega, Madison,

WI) using primers LB-1 and LB-2. This fragment was cloned into HindIII-AvaI-digested pACYC184 to create pLoBlu. A 3.1-kb fragment containing the *guaBA* operon with an optimized ribosome binding site (GAAGGAG) 8 bp upstream of the start codon was amplified from genomic DNA using primers CVOL-13 and CVOL-41 and ligated as a NotI fragment into pLoBlu to create pGuaBA.

Construction of CVD1251 Δ *stxAB*. The *stxAB* genes were deleted in *S. dysenteriae* 1 CVD 1251 using the lambda red recombination system with plasmids kindly provided by Barry Wanner (10). A 171-bp fragment upstream of *stxA* was amplified using primers Wu046 and Wu047. A 374-bp fragment downstream of *stxB* was amplified using primers Wu026 and Wu027. The upstream fragment was cloned into pUC19 as a HindIII-BamHI fragment forming pUC19-13. Next, the fragment downstream of *stxB* was cloned as a BamHI-EcoRI fragment. The *cml* gene with flanking FLP recombination target (FRT) sites was then amplified from pKD3 with primers Wu016 and Wu017 and cloned as a HindIII-blunted/BamHI fragment and ligated between the flanking fragments, forming pUC19-14. Digestion of pUC19-14 with HindIII and EcoRI released the fragment including up- and downstream *stx* regions with the *cml* marker between these two regions. This fragment was electroporated into strain CVD 1251(pKD46). Plasmid pKD46 encodes the lambda red recombinase and catalyzes recombination between homologous sequences. The resulting chloramphenicol-resistant colonies were grown at 37°C to facilitate loss of pKD46. Next, plasmid pCP20, encoding the Flip recombinase was electroporated into the strain to catalyze recombination at FRT sites and excision of the *cml* gene. The resultant strain, CVD1251 Δ *stxAB*, contains a deletion of the *stxAB* operon.

Construction of strains CVD1251 Δ *stxA::P_{trc}-stxB* and CVD1250 Δ *stxA::P_{mLpp}-stxB*. In a single lambda red-mediated allelic exchange reaction, the *stxA* gene was deleted simultaneously with the insertion of the *stxB* gene driven by the constitutive *trc* promoter (P_{trc}) or mutant Lpp (mLpp) promoter (P_{mLpp}). These promoters were selected to drive high-level expression of *stxB*. The mutagenic fragments used for allelic exchange were constructed in a series of steps in the plasmid pUC19-14 described above containing a region upstream of *stxA* and the *cml* gene with FRT-flanking sequences. First, an expression plasmid containing the modified *trc* promoter was constructed. P_{trc} is a derivative of the *tac* promoter containing 17 bp between the -10 and -35 regions of the promoter (7). An artificial promoter region containing the -35 and -10 sequences of the *trc* promoter with 17-bp intervening DNA was constructed using overlapping PCR with the oligonucleotides Trc-1 and Trc-2. This fragment was cloned as an EcoRI-SmaI fragment into the pGA2 plasmid (2) replacing the *ompC* promoter (P_{ompC}) and named pGA2-trc. Next, the *stxB* gene was amplified from genomic DNA using the primers StxB-1 and StxB-2 and ligated into pGA2-trc as an SmaI-BamHI fragment to create pGA2-trc-StxB. The P_{trc} -*stxB* fragment was excised with BamHI and EcoRI and cloned into pUC19-14 to create pUC19-15. Digestion with HindIII and EcoRI released a fragment containing the *stxA* upstream region followed by the *cml* gene with FRT sequences, followed by P_{trc} -*stxB*. This fragment was electroporated in strain CVD 1251(pKD46), and recombinant colonies were selected on chloramphenicol. Plasmid pCP20 was then introduced by electroporation to catalyze recombination at the FRT sites, resulting in excision of the *cml* gene. The resultant strain, CVD1251 Δ *stxA::P_{trc}-stxB*, contains a complete deletion of *stxA* and insertion of P_{trc} driving expression of *stxB*.

The Lpp promoter (P_{Lpp}) is one of the most efficient promoters in *E. coli* (36). One mutant derivative of P_{Lpp} containing 2 nucleotide changes in the -35 sequence and 1 nucleotide change in the -10 sequence demonstrated higher-level activity than the native sequence did (20). We used this mutated promoter sequence to drive very high expression of *stxB* in strain CVD 1256. The mutagenic primers F-35 and R-35 were used to amplify the -35 region of the Lpp promoter and introduce the 2-nucleotide mutation. The mutagenic primers F-10 and R-10 were used to amplify the -10 region and introduce the 1-bp mutation. The primers were designed to produce products that overlap. The products of the two reactions were used in a third PCR with primers F-Lpp and R-Lpp to produce a single product with P_{mLpp} . The P_{mLpp} fragment was ligated into pUC19-15 as a BamHI-NotI fragment to replace P_{trc} upstream of *stxB* and create pUC19-16. As described above for P_{trc} , digestion with HindIII and EcoRI released a fragment containing the *stxA* upstream region followed by the *cml* gene with FRT sequences, followed by P_{mLpp} -*stxB*. This fragment was electroporated in CVD 1251(pKD46), and recombinant colonies were selected with chloramphenicol. Plasmid pCP20 was then introduced by electroporation to catalyze recombination at the FRT sites, resulting in deletion of the *cml* gene. The resultant strain, CVD1251 Δ *stxA::P_{mLpp}-stxB*, contains a complete deletion of *stxA* and insertion of P_{mLpp} driving expression of *stxB*. The *stx* chromosomal region was amplified by PCR and sequenced to ensure accuracy.

Next, a deletion in the *sen* gene was introduced into each of the 3 *stx* modified strains using the lambda red recombination system. The kanamycin resistance

TABLE 2. Primers used in these studies

Primer	Sequence
CVOL-13	CTGCAGTATTCCCACTCAATGGTAGC
CVOL-41	GAAGGAGTATGCCCATGCTACGTATCG
EB1	TAGCCTTGATAATGGACGTGTA
F-10	CATAAAAAAAGTTTGTGTTATACTT
R-10	TAGCGTTGCTGGAGCAACCTG
F-35	TTGTATATCGAAGCGCCCCT
R-35	CACAAAGTTTTTTATGTTGTCAT
F-Lpp	TAAGGATCCCTAAAACCCAGCGTTCGATGC
R-Lpp	TAAGGATCCGCGGCCGCATTAATACCCTCTAGATTG
Gua311	ATGCTACGTATCGCTAAAGAAG
Gua3226	CATTACGCCAACGGAACGTAC
LB-1	CCCGGGCGTGGGTAACACAC
LB-2	AAGCTTGACGTGAGCCCAACGCA
Red-senF	TTGGATTAGCTCAGTCAATCCCATACGCATCGCGTGATAAATAACTTTGGGGTGAAGTA AATTATCAGGCGTGTAGGCTGGAGCTGCCTC
Red-senR	CAACAACATAAGTCTGCTCACAACCCATCAATGAAAGGAATATATACATATGCCATC AGTAAATTTAACATATGAATATCCTCCTTA
StxB-1	GGGCCAGTTGAGGGGGTAAAATGAAAAAACATTATTAATAGCTG
StxB-1	GGATCCTCAACGAAAAATAAAGTTCGCTGAATCC
StxB-2409	ATGCCCGGAGTTGAGGGGGTAAAATGAAAAAACATTA
StxB-2693	ATCGAGCGGGATCCTCAACGAAAAATAAAGTTCGCTGAATCC
Trc-1	GAATTCGATCCCATCCTCGCATGGATGTTTTATAAAAAACATGATTGACAT
Trc-2	CCCGGGGCGGCGCCACACATTATAACCTATATGCAACATGATGTCAATCATGTTT
Wu016	TAAAAGCTTGTGTAGGCTGGAGCTGCTTC
Wu017	TAAGAATTCGCGGGCGCCGCGGATCCATATGAATATCCTCCTTA
Wu029	ATCCACCACTCTGATCGAGGTTT
Wu030	GCTGAAGTCCGGAAATTACAGG
Wu033	TAGGCTAGCTGAAAAAACATTATTAATAGC
Wu035	TAGGCTAGCTCAACGAAAAATAAAGTTCGCTG
Wu036	ATGAAAAATAATTATTTTTAGAGTGC
Wu045	ACTGCTAATAGTTCTGCGCATCAG
Wu046	TAAAAGCTTTCGCATGAGATCTGACCAGAT
Wu047	TAAGGATCCCCGGTTACACAATACTCCTTGAGC
Wu048	GTGAAGGTGAAGCCCGTGAAGT
Wu049	TGCAGCAGCATTGCGGTTACG
Wu050	TAAGGATCCAACAGGTCGTCATCCCACGT
Wu051	TAATCTAGACCTGATATCGCCATCATGATTGC
Wu052	TAATCTAGACTCAGAATAGCTCAGTGA
Wu053	TAAAAGCTTCCCGGGTCTGCACATCATGCAGAC
Wu061	CGTTGTAGCGGTAGTTCGAGCTGC
Wu064	CGTAAATGAGTTGCTGTATGGTTGG
Wu065	GTTACCGATCACTCTGGAAGACT
Wu125	GAAGTTAGGGCTCGGATTATACCTGA
Wu126	ATCTCTACTGAACGCGAGAAGCAGA
StxB-RTF	CGCCTGATTGTAACTGGA
StxB-RTR	TGCGCACTGAGAAGAAGAGA
rpoB-F	GCGTCTGGTATCTATGAGCG
rpoB-R	CGTTGTCTGTCATGAGCGGA
gyrB-F	ACATTTCGTACGCTGCTGTTGA
gyrB-R	CTTCACTTTGTACAGCGGCG

gene plus FRT sequences from pKD46 were amplified using primers Red-senF and Red-senR. These primers contain tails that correspond to downstream (nucleotides 73530 to 73599 [GenBank accession no. AF348706]) and upstream (nucleotides 74279 to 74348 [GenBank accession no. AF348706]) sequences flanking the *sen* gene. The amplified product was electroporated into CVD1251 Δ *stxAB*(pKD46), CVD1251 Δ *stxA::P_{trc}-stxB*(pKD46), and CVD1251 Δ *stxA::P_{mLpp}-stxB*(pKD46). Kanamycin-resistant colonies were selected and grown at 37°C to facilitate the loss of pKD46. Next, plasmid pCP20, encoding the Flip recombinase was electroporated into each strain to catalyze recombination at FRT sites and excision of the kanamycin resistance gene. Kanamycin-sensitive colonies were confirmed for deletion of *sen* by a series of diagnostic PCRs. The *sen* deletion corresponds to a 678-bp deletion. The resultant three strains were named CVD 1255, CVD 1257, and CVD 1256, respectively.

Construction of StxB plasmids. The *stxB* gene was cloned into the stabilized expression plasmid pGA2 (2) and driven by P_{trc} or P_{OmpC} . Plasmid pGA2-*trc*-StxB is described above and named pTrc-StxB for simplicity. Plasmid pGA2-StxB

contains P_{OmpC} driving the expression of *stxB* and was constructed as follows. The *stxB* gene was amplified using primers StxB-2409 and StxB-2693 and cloned into pGA2 as an SmaI-BamHI fragment and named pOmpC-StxB. These plasmids were electroporated into *S. dysenteriae* 1 strain CVD 1255 to create CVD 1255(pTrc-StxB) and CVD 1255(pOmpC-StxB).

Construction of strain CVD 1254. Complete deletion of *stxAB* was accomplished in the wild-type *S. dysenteriae* 1 strain 1617 using the suicide plasmid pCVD442 for allelic exchange. Primers Wu050 and Wu051 amplified a 1,020-bp region upstream of *stxA*, and primers Wu052 and Wu053 amplified a 830-bp fragment downstream of *stxB*. The two PCR products were cloned into suicide plasmid pCVD442 (11), which was electroporated into *S. dysenteriae* 1 strain 1617. Ampicillin-resistant colonies were selected as those containing the integrated plasmid. Following growth without ampicillin in the presence of sucrose, the colonies that had lost the plasmid were selected. Screening by PCR identified colonies that contained the *stxAB* deletion, and this strain was named CVD 1254.

PCR analysis. Diagnostic PCR assays were performed to confirm the genetic integrity of each strain. Primers used for confirmation of each gene in the CVD

1256 master cell bank (MCB) are as follows. Primers Wu029 and Wu030 bind to sequences upstream of *stxA* and downstream of *stxB*, respectively, and amplify a 2.2-kb product from the WT and a 1.5-kb product due to the deletion of *stxA* in CVD 1256. Primers Wu029 and Wu035 bind sequences upstream of *stxA* and downstream of *stxB*, respectively, and amplify a 1.8-kb product in the WT and a 1.1-kb product due to the deletion of *stxA* in CVD 1256. In Fig. 1D, lanes 5 and 6, the templates were amplified with primers F-Lpp and Wu030. Primer F-Lpp binds to a region within the mLpp promoter which is present only in strain CVD 1256 and not present in the WT. Primers Wu048 and Wu049 bind sequences flanking the *guaBA* operon and amplify a 1.79-kb product in the WT and a 872-bp product in CVD 1256. Primers Wu061 and EB1 bind to regions upstream and downstream of *sen*, respectively, and amplify a 1.6-kb product in the WT and a 947-bp fragment in CVD 1256, reflecting the 679-bp deletion. Template DNA consisted of a single bacterial colony added to the reaction mixture. Reactions were performed on a MJ Research minicycler (Waltham, MA) with specific parameters based on the composition of the primers and the length of the amplified product.

RNA extraction and cDNA production. For *in vitro* analysis, bacterial cells were grown to log phase (optical density at 600 nm [OD₆₀₀] of 0.6) in broth, then double volumes of RNAProtect (Qiagen, Valencia, CA) were added to each sample. RNA was extracted using the RNeasy minikit (Qiagen, Valencia, CA) following the manufacturer's instructions, including DNase treatment on the column. RNA was also isolated from bacteria within HeLa cells. The HeLa cell invasion protocol was followed, and a multiplicity of infection (MOI) of 1,000:1 was used. At 0-h and 4-h time points after invasion, the samples were harvested in TRIzol (Invitrogen) and processed with the PureLink RNA minikit (Invitrogen, Carlsbad, CA) following the manufacturer's instructions including DNase treatment on the column. cDNA was produced using 1 µg of total RNA and the qScript cDNA synthesis kit (Quanta Biosciences, Gaithersburg, MD) following the manufacturer's instructions.

Real-time reverse transcription-PCR (RT-PCR). Expression of the *stxB* gene was examined by real-time PCR. PCR was performed using the iQ5 optical real-time machine and SsoFast EvaGreen supermix (both from Bio-Rad, Hercules, CA). Amplification was performed in triplicate by the following thermal cycling conditions: (i) one cycle of 1 min at 95°C; (ii) 35 cycles, with 1 cycle consisting of 10 s at 95°C and 20 s at 58°C; and (iii) one cycle of 5 min at 72°C. The sequences of primers StxB-RTF, StxB-RTR, rpoB-F (F stands for forward), rpoB-R (R stands for reverse), gyrB-F, and gyrB-R are given in Table 2. Transcript levels were normalized to those of *rpoB* and *gyrB* to account for variability in the amount of cDNA in each sample, and relative expression levels were calculated using the $\Delta\Delta C_T$ (C_T stands for threshold cycle) method with the Bio-Rad iQ5 analysis software.

Western blot analysis. Protein expression was analyzed in whole-cell lysates or periplasmic fractions. Pelleted whole-cell bacteria or periplasmic fraction samples were mixed 1:1 (vol/vol) with Laemmli sample buffer and 5% β-mercaptoethanol and then boiled for 7 min. Aliquots of 5 µl of each sample were electrophoresed on SDS-15% polyacrylamide gels. The gels were stained with GelCode blue stain reagent (Thermo Scientific, Barrington, IL) for visualization of protein bands or transferred to polyvinylidene difluoride (PVDF) membranes (Millipore Corp., Bedford, MA) for Western immunoblot analysis. The membranes were probed with rabbit or mouse anti-StxB (BEI Resources, Manassas, VA). Western immunoblots were developed using the Odyssey system (Li-Cor Bioscience, Lincoln, NE).

Southern blot analysis. Genomic DNA was isolated from strain CVD 1256 or 1617 (WT) using Qiagen genomic-tip 20 (Qiagen, Valencia, CA) and digested with a combination of restriction enzymes, including BamHI, EcoRI, EcoRV, PstI, and BglII (NEB, Ipswich, MA). Digested DNA was separated on an agarose gel and transferred to Hybond-N⁺ membrane (Amersham/GE Healthcare, Pittsburgh, PA) where it was probed with a labeled DNA fragment corresponding to the *stxA* gene generated by PCR with primers Wu036 and Wu045 or the *stxB* gene generated by PCR with primers Wu033 and Wu035. Probe labeling and Southern blot detection were performed with the digoxigenin (DIG) high prime DNA labeling and detection starter kit II (Roche, Indianapolis, Indiana) according to the manufacturer's instructions.

HeLa cell invasion assays. HeLa cells were cultured in Eagle minimal essential medium (MEM) (Invitrogen, Carlsbad, CA) supplemented with 10% fetal bovine serum (FBS) at 37°C with 5% CO₂. For the invasion assay, HeLa cells were seeded at a density of 10⁵ cells per well in a 24-well plate and incubated overnight. A 100-µl suspension of 10⁸ bacteria was added to the HeLa cells in triplicate and incubated at 37°C with 5% CO₂ for 90 min. The cells were washed and incubated with medium containing 100 µg/ml gentamicin for 30 min (0-h time point) or 4 hours (4-h time point). Following incubation, the monolayers

were lysed with 1 ml/well of 1% Triton X-100 at the 0- and 4-h time points. Serial dilutions were plated to determine the number of viable intracellular bacteria.

Plaque assays. Plaque assays were performed essentially as described previously (43) with some modifications. Monolayers of L929 cells (kindly provided by Anthony Maurelli, Uniformed Services University of the Health Services [USUHS]) were grown to confluence in Dulbecco's modified Eagle medium (DMEM) supplemented with 10% FBS in 60-mm petri dishes. Serial 10-fold dilutions of bacterial samples were prepared in DMEM, and 100-µl samples were added to each monolayer and incubated at 37°C with 5% CO₂ for 2 h. Six milliliters of prewarmed overlay medium (3 ml of 2× DMEM containing 20% FBS and 50 µg/ml gentamicin, plus 3 ml of 1% agarose in water) was added to each monolayer. The agarose was allowed to solidify at room temperature for approximately 15 min, and the dishes were transferred back to the 37°C CO₂ incubator for 2 or 3 days. The plaques were then stained with 2 ml Giemsa stain (1 ml of 10× Giemsa solution [0.5 g Giemsa in 33 ml of glycerol and 33 ml of methanol] diluted in 9 ml working solution containing 0.05924 g Na₂HPO₄ and 0.0364 g NaH₂PO₄ in 100 ml of dH₂O) for visualization and enumeration.

T84 cell assays. The inverted, polarized T84 cell assay was performed by the method of McCormick and colleagues (30, 31) with modifications. T84 human colonic intestinal cells (ATCC, Manassas, VA) were cultured in DMEM with nutrient mixture F-12 (DMEM:F12) (Invitrogen, Carlsbad, CA). Monolayers were grown on collagen-coated 12-well inverted 3µm Transwell inserts (Corning, Lowell, MA). The Transwells were inverted, seeded with 6 × 10⁵ cells in 200 µl, incubated for 3 h, then inverted back into the well, and incubated for 7 days. The transepithelial electrical resistance (TEER) was measured using the epithelial voltohmmeter from World Precision Instruments (Sarasota, FL) over time, and only wells that reached between 600 and 3,000 Ω · cm² were used in the assay. A 500-µl aliquot containing 10⁹ bacteria/ml was added to the basolateral surface of the Transwell and incubated at 37°C with 5% CO₂ for 90 min. The cells were then washed three times with Dulbecco's phosphate-buffered saline (DPBS) containing 50 µg/ml gentamicin and incubated with medium containing 50 µg/ml gentamicin. After 24 h, the transepithelial resistance was recorded, and the medium from the basolateral and apical surfaces was harvested separately and stored at -20°C for interleukin-8 (IL-8) quantification. The IL-8 enzyme-linked immunosorbent assay (ELISA) was performed in duplicate using the human IL-8 quantikine kit (R&D Systems, Minneapolis, MN) following the manufacturer's instructions.

Serény test. The Serény (guinea pig keratoconjunctivitis) test was performed as described previously (49) to evaluate the level of attenuation of each vaccine strain versus wild-type *S. dysenteriae* 1. A 10-µl aliquot of each test strain at the designated concentration was instilled into the conjunctival sacculus of the right eye. Animals were observed daily for 5 days for signs of infection and inflammation in their eyes and assigned scores as follows: 0 for normal eye indistinguishable from the contralateral uninoculated eye, 1 for lacrimation or eyelid edema, 2 for lacrimation or eyelid edema plus mild conjunctival hyperemia, 3 for lacrimation or eyelid edema plus mild conjunctival hyperemia plus slight exudates, and 4 for full-blown purulent keratoconjunctivitis. All animal procedures were approved by the University of Maryland, Baltimore Institutional Animal Care and Use Committee.

Immunizations and sample collection. After sedation with a 1:1 solution of ketamine-xylazine, randomized, female, Hartley guinea pigs (8 weeks old) were immunized intranasally with 100 µl of the bacterial suspension containing 10⁹ CFU on day 0. An identical booster dose was administered 14 days later. Tears, elicited from guinea pigs with *Capsicum baccatum* flakes as previously described, were collected in 50-µl capillary tubes (41). Blood samples were obtained from anesthetized guinea pigs via the anterior vena cava. Tears and blood samples were collected on days 0, 14, and 28. Two weeks following the second immunization, the animals were challenged with a designated concentration of the wild-type strain 1617 following intraocular administration in the Serény test. Animals were scored for signs of inflammation for 5 days as described above.

ELISAs. Antigens used in enzyme-linked immunosorbent assay included hot water-phenol-extracted *S. dysenteriae* 1 LPS from strain 1617. Purified Shiga toxin B subunit was a kind gift from Alison O'Brien's laboratory, USUHS. The specific IgG and IgA anti-LPS and anti-B-subunit titers were determined for serum and tears. To determine the endpoint titer, 3-fold dilutions of sera or tears in 10% milk powder were added to the coated plates and incubated for 1 hour at 37°C. Peroxidase-labeled secondary antibodies were developed with 3,3',5,5'-tetramethylbenzidine (TMB) substrate for 15 min at room temperature. The reaction was stopped by the addition of 100 µl H₂PO₄, and the OD₄₅₀ was determined in an ELISA microplate reader (Multiscan Ascent; Thermo Labsystems, Helsinki, Finland). Sera and tears were run in duplicate. Linear regression curves were plotted for each sample, and titers were calculated (through equa-

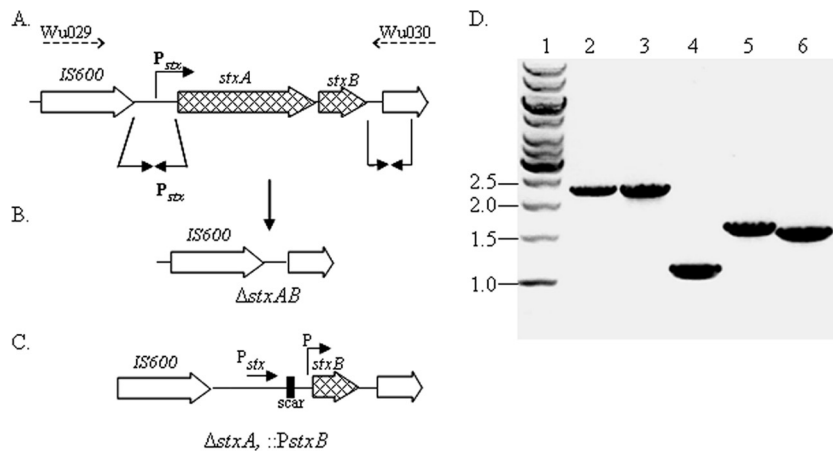


FIG. 1. (A to C) Genetic map of the *stxAB* locus in *S. dysenteriae* 1 derivative strains. (A) Genetic map of the wild-type *stxAB* locus. Solid-line arrows indicate upstream and downstream regions used in recombination to generate the derivative strains. Broken-line arrows indicate the primers used in PCR. (B) Genetic map of the resultant *stxA* deletion in strain CVD 1255. (C) Genetic map showing the deletion of *stxA* and insertion of a promoter (P_{mLpp} or P_{trc}) to drive expression of *stxB* in strains CVD 1256 and CVD 1257. (D) Results of amplification of the *stxAB* locus in derivative strains with primers Wu029 and Wu030. Template genomic DNA was from the following strains: 1617 (lane 2), CVD 1251 (lane 3), CVD 1255 (lane 4), CVD 1256 (lane 5), and CVD 1257 (lane 6). The positions (in kilobases) of molecular size markers (lane 1) are shown to the left of the gel.

tion parameters) as the inverse of the serum dilution that produces an OD_{450} of 0.2 above the blank.

Shiga toxin assays. In order to assess the neutralization activity of guinea pig serum, a modification of the Vero toxin assay was performed as previously described (28). Ninety-six-well flat-bottomed tissue culture treated plates (Corning, Corning, NY) were seeded with 1.4×10^4 Vero cells/well in complete medium (MEM with 10% FBS) and incubated overnight at 37°C in 5% CO_2 . Test samples were prepared as follows. A 50- μ l aliquot containing 0.005 ng of purified Shiga toxin (BEI Resources, Manassas, VA) was mixed with an equal volume of serial dilutions of guinea pig sera and incubated for 1 h at 37°C. A 100- μ l aliquot of each mixture was added to duplicate wells in the 96-well plate seeded with Vero cells. The plate was incubated at 37°C in 5% CO_2 for 48 h. The cells were fixed with 2% formalin for 5 min at room temperature and then stained with 0.3% crystal violet for 30 min at room temperature. The plates were read on a Labsystems Multiskan Ascent microtiter dish reader at 620 nm. The neutralization titer was defined as the dilution of guinea pig serum that neutralized 50% of the cytotoxic effect of a standard amount of Shiga toxin.

RESULTS

Attenuated *S. dysenteriae* 1 strain construction. The *guaBA* deletion attenuating strategy that diminished the virulence of *S. flexneri* 2a (22) was applied to *S. dysenteriae* 1 strain 1617, resulting in *S. dysenteriae* 1 Δ *guaBA* strain CVD 1251. Since *guaB* and *guaA* form an operon, a single deletion inactivates both genes. The resultant derivative was auxotrophic for guanine, but growth could be complemented by adding exogenous guanine to the medium or providing a plasmid, pGua, containing wild-type *guaBA* in *trans* (data not shown).

Shigella enterotoxin 2 (ShET-2) is encoded by *sen* located on the invasion plasmid (37). The *sen* gene, found in all *Shigella* strains, was deleted from the *S. dysenteriae* 1 Δ *guaBA* derivatives as a secondary attenuating mutation. The *set* operon which is present only in *S. flexneri* 2a did not serve as a target for mutation in *S. dysenteriae* 1 (40).

Shiga toxin is encoded by the *stxAB* operon located within defective phage sequences in the *S. dysenteriae* 1 chromosome. It is essential that Shiga toxin activity be eliminated in a vaccine strain. An *S. dysenteriae* 1 Δ *guaBA* Δ *sen* Δ *stxAB* strain, CVD 1255, was constructed with a complete deletion of the *stxAB*

operon. PCR assays confirmed the 1.1-kb deletion in strain CVD 1255 (Fig. 1). Since antibodies to StxB can neutralize Shiga toxin activity *in vitro* and *in vivo* (1, 6, 8, 27), a series of strains was constructed with deletions in *stxA* but with directed high-level expression of *stxB* from either the native chromosomal site or from a plasmid. All candidate vaccine strains contained the *guaBA* and *sen* deletions.

A one-step process based on the lambda red recombination system was employed to catalyze deletion of the *stxA* gene with concomitant insertion of a promoter to drive high-level *stxB* expression from the chromosomal locus. Strains CVD 1256 and CVD 1257 harbor a complete deletion of *stxA* and insertion of a mutant Lpp promoter, P_{mLpp} , or a *trc* promoter, P_{trc} , strong constitutive promoters, upstream of *stxB*. The mutagenic fragments used for allelic exchange were constructed in a series of steps as described in Materials and Methods using a region upstream of *stxA* and the *cml* gene with FRT-flanking sequences. Each resultant strain was confirmed for genetic integrity at the *stx* locus using PCR assays (Fig. 1). Primers Wu029 and Wu030 amplify a 2.2-kb fragment containing *stxAB* in WT strain 1617 and in CVD 1251, which contains only the *guaBA* deletion. In contrast, with DNA from strain CVD 1255 which contains the complete *stxAB* deletion, a 1.1-kb fragment is amplified. Amplicons with sizes of 1.7 and 1.6 kb were generated from strains CVD 1256 and CVD 1257, respectively, confirming the deletion of *stxA* with the presence of *stxB* and a new promoter sequence. The locus in CVD 1256 is slightly larger than that in CVD 1257 due to the increased size of the P_{mLpp} region.

High-level expression of StxB was also evaluated using a stabilized plasmid platform. The *stxB* gene driven by either the constitutive *trc* or *OmpC* promoter was cloned into this plasmid to create pTrc-StxB and pOmpC-StxB. Each plasmid was electroporated into *S. dysenteriae* 1 strain CVD 1255 and named CVD 1259 and CVD 1258, respectively.

One final derivative was constructed; this derivative contains

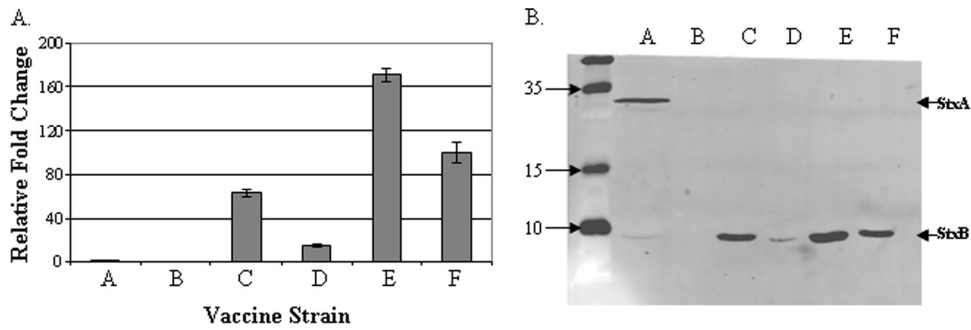


FIG. 2. *stxB* gene and protein expression in *S. dysenteriae* 1 vaccine strains. (A) qRT-PCR was used to measure *stxB* expression in each vaccine strain. Values shown are fold change in the C_T value relative to the value for strain CVD 1251. (B) Western blot analysis of periplasmic fractions isolated from each strain probed with a combination of anti-StxA and anti-StxB antibodies. Bars or lanes: A, CVD 1251; B, CVD 1255; C, CVD 1256; D, CVD 1257; E, CVD 1255(pTrc-StxB); F, CVD 1255(pOmpC-StxB). The positions of the StxA and StxB subunits are indicated by the arrowheads to the right of the gel. The positions of molecular mass (in kilodaltons) in the unlabeled leftmost lane are indicated to the left of the gel.

only a single mutation, the complete deletion of the *stxAB* locus. *S. dysenteriae* 1 1617 Δ *stxAB*, designated CVD 1254 maintains the full virulence capacity of *Shigella* except for the ability to manifest Shiga toxin activity.

StxB is expressed from chromosomal and plasmid locations in *Shigella* vaccine strains. Quantitative real-time PCR was used to measure the expression of *stxB* in the vaccine strains (Fig. 2). Strain CVD 1255 with its complete deletion of *stxAB* was employed as a negative control; no expression was detected in this strain. Strain CVD 1251 has an intact *stxAB* locus that is regulated by iron in the wild-type background and is induced in low-iron environments. The strains were grown in LB, a rich medium not limited for iron, and *stxB* expression was low as expected. The expression level of *stxB* in all other strains is expressed relative to that of CVD 1251. Strains CVD 1256 and CVD 1257 containing chromosomal copies of *stxB* driven by P_{mLpp} or P_{trc} promoters, respectively, express *stxB* 63 and 14 times higher than CVD 1251. The two plasmid-containing constructs driving expression of *stxB* from the P_{trc} or P_{OmpC} promoters expressed *stxB* 171 and 100 times higher, respectively, than CVD 1251.

Western blot analysis assessed StxB protein expression in periplasmic fractions of the *S. dysenteriae* 1 derivatives (Fig. 2). The protein levels mirrored gene transcription levels measured by quantitative reverse transcription-PCR (qRT-PCR). Both StxA and StxB subunits were detected when periplasmic fractions of strain CVD 1251 (which contains an intact *stxAB* locus) was probed with anti-StxA and anti-StxB antibodies. As expected, a low level of StxB was expressed due to the noninducing growth conditions. Neither the A subunit nor the B subunit is present in strain CVD 1255 due to the deletion of the entire locus (Fig. 2B, lane B). Insertion of a strong promoter in strains CVD 1256 and CVD 1257 resulted in increased StxB expression (Fig. 2B, lanes C and D). *In vitro*, P_{mLpp} drove higher-level expression of StxB than P_{trc} did. Attenuated *S. dysenteriae* 1 derivatives containing plasmids encoding StxB produced the highest levels of StxB protein (Fig. 2B, lanes E and F).

Attenuated *Shigella* derivatives display reduced virulence phenotypes. The attenuated derivatives were evaluated for invasion and replication in HeLa cells, cell-to-cell spread in

plaque assays, and IL-8 production in polarized T84 cells. Wild-type *S. dysenteriae* 1 strain 1617 invades cells at high efficiency within 90 min. The bacteria thereupon undergo intracellular replication with approximately 5 doublings in the subsequent 4 h (Fig. 3). As expected, introduction of a deletion in *stxAB* in strain CVD 1254 did not affect invasiveness or intracellular replication. In contrast, any mutant derivative containing the *guaBA* deletion was able to efficiently invade HeLa cells at levels comparable to that of the wild type but was unable to replicate within the subsequent 4-h incubation period (Fig. 3). Moreover, while the wild-type strain and *stxAB*-deleted *S. dysenteriae* 1 strains formed plaques in a dose-dependent manner, the *guaBA*-deleted strains were completely unable to form plaques (data not shown).

A hallmark of *Shigella* infections is the induction of a robust inflammatory response characterized by production of the pro-inflammatory cytokine IL-8. The inverted T-84 cell polarized monolayer system was used to measure IL-8 induction by wild-type and attenuated vaccine strains. Wild-type strain 1617 and

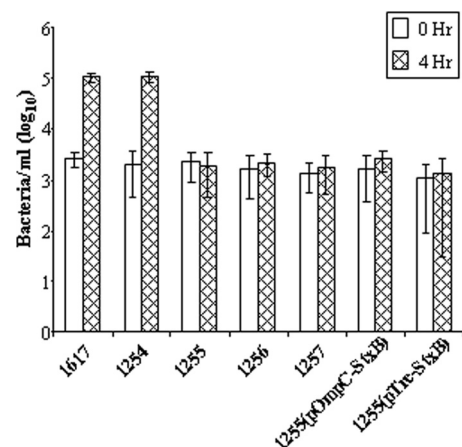


FIG. 3. HeLa cell invasion by *S. dysenteriae* vaccine strains. Bacteria (strains 1617, CVD 1254, CVD 1255, etc.) were incubated with HeLa cell monolayers at an MOI of 100 for 90 min and washed with phosphate-buffered saline (PBS) containing gentamicin. The cells were lysed to enumerate intracellular bacteria at 0 h and 4 h postinfection.

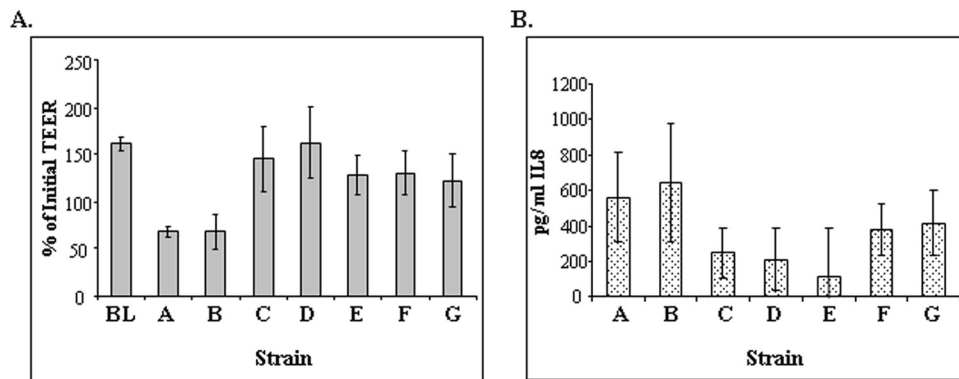


FIG. 4. IL-8 production and TEER in inverted polarized T-84 cells infected with *S. dysenteriae* 1 derivatives. T-84 cells were grown on inverted transwells, and bacteria were applied to the basolateral surface. IL-8 secretion was measured in basolateral supernatants after 24 hours of incubation. TEER was measured prior to infection and at 24 h postinfection and expressed as a percentage of the initial TEER. Bars: BL, blank; A, WT 1617; B, CVD 1254; C, CVD 1255; D, CVD 1256; E, CVD 1257; F, CVD 1255(pOmpC-StxB); G, CVD 1255(pTrc-StxB). The TEER values for strains 1617 and CVD 1254 were significantly less than all other strains and are indicated with an asterisk ($P < 0.01$, using an unpaired Student's *t* test).

stxAB-deleted *S. dysenteriae* 1 strain CVD 1254 exhibited strong IL-8 responses within 24 hours (Fig. 4). In contrast, while not reaching statistical significance, the *guaBA*-deleted mutants tended to induce lower levels of IL-8 in this system. Transepithelial electrical resistance (TEER) was recorded in the polarized cells as a measure of the integrity of the monolayer. Wild-type *S. dysenteriae* 1 causes a notable drop in TEER over the 24-hour period following addition of the bacteria (Fig. 4A). CVD 1254 showed a comparable decrease. The derivative strains containing the *guaBA* deletion did not significantly diminish TEER over the 24-hour period. Instead, TEER continued to increase, as seen with uninfected cells.

Attenuated vaccine strains are safe and immunogenic in the guinea pig model. Each vaccine candidate was tested for reduced virulence in the guinea pig Serény test. A dose of 10^8 CFU was inoculated into the guinea pig eye. The degree of inflammation was graded daily for 5 days. Wild-type *S. dysenteriae* 1 caused a profound inflammatory response that progressed to full-blown keratoconjunctivitis within 48 to 72 h postinoculation; all 18 animals reached the maximum score of 4 by 72 h postinfection (Table 3). The same response was observed in animals inoculated with the Shiga toxin-deleted mutant CVD 1254. This was expected, since the Serény test is a test of the invasive and inflammatory induction capabilities of *Shigella*. In contrast, all *guaBA*-deleted vaccine strains showed decreases in this composite measurement of virulence and did

not cause inflammation in the guinea pig eye; the scores for all eyes were 0 at each observation point postchallenge. The overexpression of Shiga toxin in strains CVD 1256 and CVD 1257 and the plasmid-containing strains did not influence the attenuation of the strains.

The immunogenicity of the vaccine candidates was assessed in the guinea pig mucosal immunization model. The primary readout for immunity to *Shigella* is O-antigen-specific anti-LPS responses. Animals immunized with two 10^9 CFU doses of any attenuated *S. dysenteriae* 1 vaccine strain responded with significant rises in anti-*S. dysenteriae* 1 LPS serum IgG and mucosal IgA anti-LPS following the first dose (Fig. 5). These titers were boosted to higher levels following the second dose. Consistent with the high *S. dysenteriae* 1-specific titers, all immunized animals were protected against keratoconjunctivitis when challenged with wild-type *S. dysenteriae* 1 strain 1617 2 weeks following the second immunization (Table 4). All nine unimmunized controls succumbed to infection, attaining eye scores of 4 by 72 h postinfection, while no immunized animal exhibited keratoconjunctivitis following challenge. The eye of one animal immunized with strain CVD 1256 had a score of 1 at 72 hours postchallenge which resolved to 0 the following day (minimal evidence of fleeting inflammation).

A secondary endpoint was the elicitation of antibodies against the Shiga toxin B subunit. Strain CVD 1255(pTrc-StxB) induced the highest levels of serum IgG anti-StxB (Fig. 5). This is consistent with the results of Western blot analysis which demonstrated the highest level of StxB expression in this strain. The other plasmid-containing strain, CVD 1255(pOmpC-StxB), did not induce anti-StxB titers in vaccinated animals. This was unexpected, given Western blot analysis demonstrating expression of the antigen in this strain *in vitro*. CVD 1256, the vaccine strain with the constitutive mLpp promoter driving *stxB* expression from the chromosomal site elicited a robust anti-StxB antibody response. CVD 1257, with chromosomal StxB expression driven by the *trc* promoter, was unable to induce anti-StxB antibodies. The capacity of these antibodies to neutralize Shiga toxin in the Vero cell assay was evaluated. Results showed that neutralization titers corre-

TABLE 3. Serény test results

Test strain	Challenge dose (CFU)	No. of animals exhibiting keratoconjunctivitis/total no. of animals
1617 (wild type)	10^8	18/18
CVD 1254	10^8	9/9
CVD 1255	10^8	0/8
CVD 1256	10^7	0/10
CVD 1256	10^8	0/14
CVD 1256	10^9	0/10
CVD 1256	10^{10}	0/10

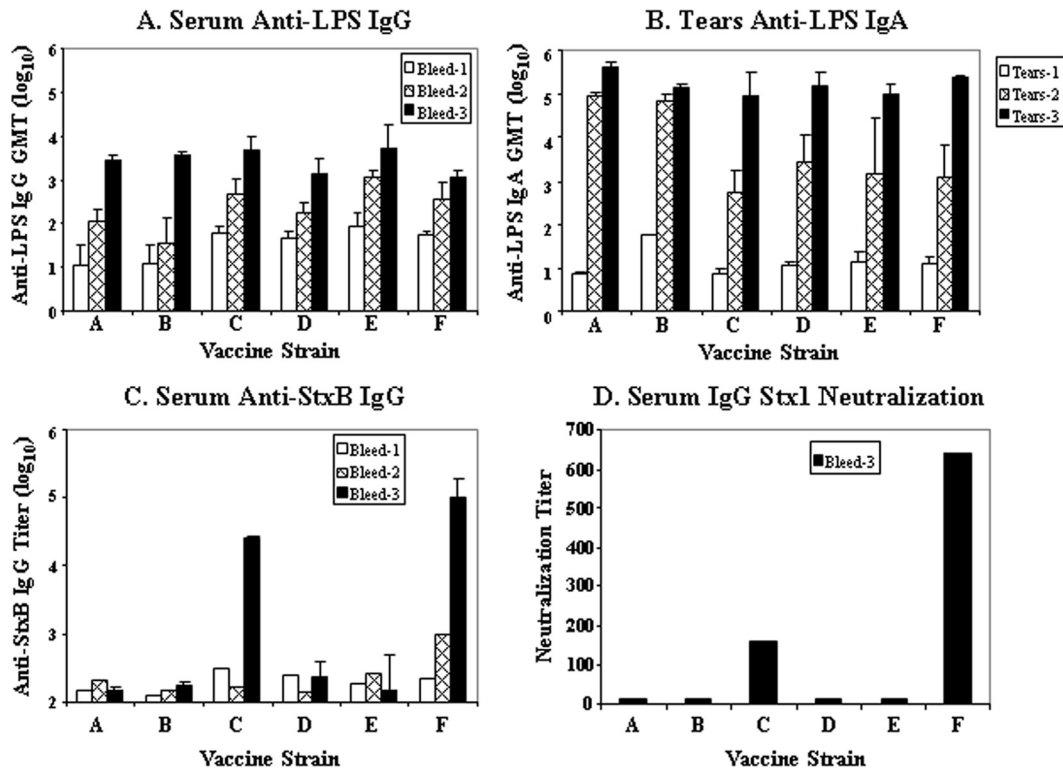


FIG. 5. Immunogenicity of attenuated *S. dysenteriae* 1 vaccine strains. (A and B) Anti-*S. dysenteriae* 1 LPS IgG in serum (A) and mucosal IgA in tears (B) were measured prior to immunization (bleed 1) and 2 weeks after each dose (bleeds 2 and 3). Geometric mean titers (GMTs) are presented for each immunization group. (C) Anti-StxB1B titers in serum were measured, and the titer for pooled samples in each group is shown for bleeds 1 and 2 and the GMT for individual animals is shown for bleed 3. (D) Stx1 toxin neutralization titers are shown for pooled samples from each group. Vaccine strains are as follows: A, CVD 1251; B, CVD 1255; C, CVD 1256; D, CVD 1257; E, CVD 1255(pOmpC-StxB); F, CVD 1255(pTrc-StxB).

sponded to ELISA titers; the vaccine strain CVD 1255(pTrc-StxB) expressing StxB from a plasmid induced the highest toxin neutralizing titers, while chromosomally expressed StxB strain CVD 1256 induced lower neutralizing titers (Fig. 5).

Expanded preclinical studies with strain CVD 1256. Because of the promising immune responses elicited by strain CVD 1256 to both *S. dysenteriae* 1 LPS and Shiga toxin B subunit, combined with the stability of the chromosomal location for StxB antigen expression, this strain was identified for advancement to clinical trials. A master cell bank (MCB) was

prepared by the CVD Inoculum Preparation and Clinical Microbiology Unit. The CVD 1256 MCB underwent extended characterization and testing. The genotype of each of the 3 mutations was confirmed with a series of PCR assays and by sequencing each chromosomal locus, including 1-kb flanking regions on both ends to ensure integrity (data not shown).

An expanded dose range was tested for safety in the Serény test where inoculation of CVD 1256 MCB at 10^7 to 10^{10} CFU was found to be nonreactogenic (Table 3). The efficacy of vaccination with strain CVD 1256 to protect against an expanded range of challenge doses was established in the Serény test (Table 4). Immunization of guinea pigs with two doses of CVD 1256 was able to protect against wild-type *S. dysenteriae* 1 challenge at doses of 10^7 and 10^8 CFU. One of four animals immunized with CVD 1256 and challenged with the higher dose of 10^9 CFU of WT strain 1617 was not protected. The eye of this animal reached a score of 4 at 72 hours postinfection and represents one vaccine breakthrough compared to all 9 unvaccinated animals which succumbed to full-blown keratoconjunctivitis following challenge with a lower dose of 10^8 CFU of strain 1617.

TABLE 4. Vaccine-induced protection against wild-type *S. dysenteriae* 1 challenge

Vaccine strain	Vaccine dose (CFU)	Challenge dose (CFU)	No. of animals protected ^a /total no. of animals
CVD 1255	10^9	10^8	4/4
CVD 1256	10^9	10^7	7/7
	10^9	10^8	13/13
	10^9	10^9	3/4
CVD 1257	10^9	10^8	8/8
CVD 1255(pOmpC-StxB)	10^9	10^8	8/8
CVD 1255(pTrc-StxB)	10^9	10^8	6/6
None (PBS) (control)		10^8	0/9

^a Protection against full-blown keratoconjunctivitis (score of 4) at any time point postchallenge.

DISCUSSION

Our interest in developing a vaccine to prevent Shiga dysentery is driven by two motivations: (i) to have a practical

public health tool that can help limit morbidity and mortality among underprivileged populations in developing countries that are cyclically affected by epidemics and pandemics caused by *S. dysenteriae* 1 (17, 19, 35, 47) and (ii) to provide a vaccine for reactive intervention to protect U.S. populations in the face of a deliberate bioterror release of *S. dysenteriae* 1 by nefarious individuals, recognizing that the immunological susceptibility of the U.S. population, the high transmissibility and multiple antibiotic resistance of current strains of this pathogen, and the severity of the disease it causes (that can be fatal even for healthy adults) make it a fearsome category B bioterror pathogen.

We pursued a strategy to develop live oral vaccine candidates following the proof of principle provided by the streptomycin-dependent live oral vaccines (of other serotypes) that conferred a high level of protection against natural disease in controlled field trials (33, 34) and as a result of our experience in genetic manipulation and engineering of other serotypes of *Shigella*. The two specific tactics we applied were to construct a series of *S. dysenteriae* 1 vaccine candidates containing a fundamental attenuating mutation in the *guaBA* locus, in conjunction with deletions in the *stx* and *sen* loci to detoxify the vaccine strains. These deletions were introduced into antibiotic-sensitive *S. dysenteriae* 1 strain 1617, which was originally isolated from a patient early in the pandemic in Guatemala in the 1960s, and that was shown to cause Shiga dysentery in human volunteers and in rhesus macaques (25). The *guaBA* mutation, which rendered the vaccine candidates auxotrophic for guanine, did not impair their ability to invade cells but made them incapable of intracellular replication. This set of characteristics makes the strains nonreactogenic in the guinea pig keratoconjunctivitis test yet able to elicit protective immune responses.

With respect to enterotoxins elaborated by *Shigella*, the *set* operon encoding ShET-1 is present only in the chromosome of the *S. flexneri* 2a serotype (15, 40), so it is not relevant for the engineering of *S. dysenteriae* 1 vaccines. In contrast, *sen*, which encodes ShET-2, and is present on the invasiveness plasmid of all *Shigella* serotypes (37, 52), was targeted for deletion in the *S. dysenteriae* 1 derivatives. ShET-2 was originally identified as an enterotoxin involved in the early phase of watery diarrhea associated with *Shigella* and enteroinvasive *E. coli* infections (37). Recent reports demonstrate that ShET-2 is secreted via a type III secretion system and may also play a role in *Shigella*-induced inflammation of epithelial cells (14, 44).

S. dysenteriae 1 is unique among the *Shigella* in its expression of Shiga toxin, which is responsible for hemolytic-uremic syndrome, one of the most feared complications of Shiga dysentery, as it can lead to renal shutdown and death. Activity of this potent toxin was eliminated from the vaccine strains by deleting the entire *stxAB* operon in strains CVD 1254 and CVD 1255 or by deleting *stxA* (that encodes the enzymatically active A subunit) in CVD 1256 and CVD 1257. Earlier investigators isolated *S. dysenteriae* 1 strains that lacked Shiga toxin activity following anaerobic growth on medium containing chlorate, which selects for bacteria that have lost the *fnr* locus via deletion of a 20-kb chromosomal region that includes *stxAB* (39, 53). While this method was effective for isolating Shiga toxin-negative strains, the large chromosomal deletion consequent to the chlorate treatment includes the loss of other genes besides

stxAB. Employing advanced molecular biological techniques, we were able to engineer precise defined deletions limited to the *stx* locus in these vaccine candidates. *S. dysenteriae* 1 strain CVD 1255 containing a precise deletion in *stxAB*, as well as in *guaBA* and *sen*, was attenuated for virulence in the Serény test and elicited serum IgG and mucosal IgA anti-*S. dysenteriae* 1 LPS responses in guinea pigs following mucosal (intranasal [i.n.]) immunization. Moreover, vaccinated animals were protected against challenge with virulent wild-type *S. dysenteriae* 1 that induced purulent keratoconjunctivitis in the unvaccinated control animals.

Four other vaccine candidates that overexpressed StxB from plasmid or chromosomal sites were constructed in order to elicit Shiga toxin neutralizing antibodies. Shiga toxin from *S. dysenteriae* 1 is essentially identical to Shiga-like toxin 1 (SLT-1) produced by Shiga toxin-expressing *E. coli* (STEC) with only a single amino acid difference in the A subunit. A vaccine capable of eliciting Shiga toxin neutralizing antibodies has the additional potential value of providing protection against the severe complications following infection with other SLT-1-expressing enteropathogens. However, protection would not be offered against strains that elaborate SLT-2.

As expected, *stxB* transcript and protein expression was highest in the plasmid-encoded strains with P_{trc} driving the highest levels. CVD 1256 and CVD 1257, the strains harboring chromosomal *stxB* constructions, also expressed *stxB* transcript and protein, albeit at lower levels. The various candidates also allowed us to compare the effects of two different strong constitutive promoters and revealed that P_{mLpp} was clearly superior to P_{trc} for directing StxB expression from a chromosomal site, as evidenced by qRT-PCR and Western blot analysis. Interestingly, the level of expression of StxB *in vitro* did not accurately predict the level of anti-StxB antibodies elicited in vaccinated guinea pigs. While CVD 1255(P_{Trc} -StxB) induced the highest anti-StxB ELISA titers, as well as the highest toxin neutralizing activity, the other plasmid-containing strain, CVD 1255(P_{OmpC} -StxB), did not induce anti-StxB serum IgG. We hypothesize that P_{OmpC} did not drive a high level of StxB expression *in vivo*. However, P_{OmpC} has been used previously in a plasmid construct to drive expression of the enterotoxigenic *E. coli* (ETEC) colonization factor antigen I (CFA/I) operon which elicited robust antifimbrial responses in the guinea pig model (3, 21). In the latter case, the live vector was an attenuated *S. flexneri* 2a strain, whereas in the current studies, the vector is *S. dysenteriae* 1. It is possible that P_{OmpC} might function differently *in vivo* in different live vector backgrounds. Alternatively, characteristics of the antigens themselves may be responsible for differential responses. The chromosomally encoded *stxB* gene driven by P_{mLpp} in strain CVD 1256 was also able to induce robust anti-StxB binding and neutralizing titers. It is noteworthy that P_{trc} at the chromosomal site was ineffective in driving StxB expression *in vitro* and was also unable to induce anti-StxB responses following mucosal immunization of guinea pigs.

All the *S. dysenteriae* 1 vaccine candidates were able to elicit strong serum IgG and mucosal IgA anti-LPS responses at equivalent levels and protected guinea pigs against virulent wild-type bacterium challenge. The overexpression of StxB did not diminish the immunogenicity of the live vector. The ability of vaccine candidate CVD 1256 to induce protective anti-S-

dysenteriae 1 responses and to induce Shiga toxin neutralizing antibodies from a stable chromosomal site led to its selection for advancement. While one plasmid-containing strain, CVD 1259, induced higher anti-StxB responses, the greater stability of the chromosomal StxB expression site in CVD 1256 was deemed more advantageous overall as a future human vaccine strain. Expanded Serény and challenge studies confirmed the safety and immunogenicity of the CVD 1256 MCB. These data will be included in studies required for advancement to clinical trials.

Another *S. dysenteriae* 1 derivative, strain CVD 1254, contained only the precise *stxAB* deletion. This strain remained fully invasive in HeLa cells and virulent in the Serény test equivalent to the wild-type parent. These results were anticipated, since Shiga toxin is not involved in the invasive phenotype associated with all *Shigella*. Shiga toxin-negative strains have been shown to cause dysentery in monkeys and humans (18, 25, 39). The CVD 1254 strain was generated to serve as a challenge strain for future volunteer studies to assess the efficacy of the Shiga vaccine candidates, while avoiding the potential dangers of clinical complications (hemolytic-uremic syndrome [HUS]) that might accompany the use of a fully virulent Shiga toxin-expressing challenge organism. Challenge with CVD 1254 can be pivotal in testing the efficacy of *S. dysenteriae* 1 vaccines, recognizing that it is difficult to assess the efficacy of Shiga vaccines due to the spotty occurrence of the disease globally during interpandemic periods.

Other strategies for the development of vaccines to prevent *S. dysenteriae* 1 disease that have advanced to clinical trials include an *S. dysenteriae* type 1 O-antigen LPS polysaccharide-carrier protein conjugate that was immunogenic in volunteers (9, 46, 51) and two live attenuated *S. dysenteriae* 1 vaccine strains, including strains SC599 (with mutations in *icsA*, *ent*, *fep*, and *stxA::hgR*) and WRSd1 (harboring mutations in *virG* and *stxAB*) (32, 48). Both of these live vaccines were well tolerated and moderately immunogenic, inducing anti-*S. dysenteriae* 1 LPS IgA antigen-secreting cell (ASC) responses in approximately 50% and 60% of volunteers, respectively. The SC599 vaccine strain retained the *stxB* gene; however, anti-StxB responses were not measured (48). These studies have paved the way for the evaluation of a new generation of live attenuated *S. dysenteriae* 1 vaccines. Clinical studies with strain CVD 1256 will confirm the attenuating capacity of the *guaBA* deletion in a second species of *Shigella* and its ability to induce Shiga toxin neutralizing responses. An efficacious *S. dysenteriae* 1 vaccine would serve as an important public health tool for impoverished populations in regions of the world that have been historically prone to *S. dysenteriae* 1 explosive epidemics and pandemics. Such a vaccine would also constitute a countermeasure that provides preparedness against the possibility of a bioterror attack involving the deliberate release of virulent *S. dysenteriae* 1.

ACKNOWLEDGMENTS

This work was supported by grants AI059223 and AI57168 from the National Institute of Allergy and Infectious Diseases of the National Institutes of Health.

We thank Alison O'Brien at USUHS for Shiga toxin reagents.

REFERENCES

- Acheson, D. W., M. M. Levine, J. B. Kaper, and G. T. Keusch. 1996. Protective immunity to Shiga-like toxin I following oral immunization with Shiga-like toxin I B-subunit-producing *Vibrio cholerae* CVD 103-HgR. *Infect. Immun.* **64**:355–357.
- Altboum, Z., M. M. Levine, J. E. Galen, and E. M. Barry. 2003. Genetic characterization and immunogenicity of coli surface antigen 4 from enterotoxigenic *Escherichia coli* when it is expressed in a *Shigella* live-vector strain. *Infect. Immun.* **71**:1352–1360.
- Barry, E. M., J. Wang, T. Wu, T. Davis, and M. M. Levine. 2006. Immunogenicity of multivalent *Shigella*-ETEC candidate vaccine strains in a guinea pig model. *Vaccine* **24**:3727–3734.
- Bloom, P. D., et al. 1994. Haemolytic-uraemic syndrome in adults with resistant *Shigella dysenteriae* type I. *Lancet* **344**:206.
- Bogaerts, J., et al. 1985. *Shigella* and *Salmonella* species from Kigali (Rwanda) (1976–1982). *Ann. Soc. Belg. Med. Trop.* **65**:281–292.
- Boyd, B., S. Richardson, and J. Garipey. 1991. Serological responses to the B subunit of Shiga-like toxin 1 and its peptide fragments indicate that the B subunit is a vaccine candidate to counter action of the toxin. *Infect. Immun.* **59**:750–757.
- Brosius, J., M. Erfle, and J. Storella. 1985. Spacing of the –10 and –35 regions in the tac promoter. Effect on its in vivo activity. *J. Biol. Chem.* **260**:3539–3541.
- Butterton, J. R., E. T. Ryan, D. W. Acheson, and S. B. Calderwood. 1997. Coexpression of the B subunit of Shiga toxin 1 and EaeA from enterohemorrhagic *Escherichia coli* in *Vibrio cholerae* vaccine strains. *Infect. Immun.* **65**:2127–2135.
- Cohen, D., et al. 1996. Safety and immunogenicity of investigational *Shigella* conjugate vaccines in Israeli volunteers. *Infect. Immun.* **64**:4074–4077.
- Datsenko, K. A., and B. L. Wanner. 2000. One-step inactivation of chromosomal genes in *Escherichia coli* K-12 using PCR products. *Proc. Natl. Acad. Sci. U. S. A.* **97**:6640–6645.
- Donnenberg, M. S., and J. B. Kaper. 1991. Construction of an *eae* deletion mutant of enteropathogenic *Escherichia coli* by using a positive-selection suicide vector. *Infect. Immun.* **59**:4310–4317.
- DuPont, H. L., et al. 1972. Immunity in shigellosis. II. Protection induced by oral live vaccine or primary infection. *J. Infect. Dis.* **125**:12–16.
- DuPont, H. L., M. M. Levine, R. B. Hornick, and S. B. Formal. 1989. Inoculum size in shigellosis and implications for expected mode of transmission. *J. Infect. Dis.* **159**:1126–1128.
- Farfan, M. J., C. S. Toro, E. M. Barry, and J. P. Nataro. 2011. *Shigella* enterotoxin-2 is a type III effector that participates in *Shigella*-induced interleukin 8 secretion by epithelial cells. *FEMS Immunol. Med. Microbiol.* **61**:332–339.
- Fasano, A., et al. 1995. *Shigella* enterotoxin 1: an enterotoxin of *Shigella flexneri* 2a active in rabbit small intestine in vivo and in vitro. *J. Clin. Invest.* **95**:2853–2861.
- Ferreccio, C., et al. 1991. Epidemiologic patterns of acute diarrhea and endemic *Shigella* infections in children in a poor periurban setting in Santiago, Chile. *Am. J. Epidemiol.* **134**:614–627.
- Gangarosa, E. J., et al. 1970. Epidemic Shiga bacillus dysentery in Central America. II. Epidemiologic studies in 1969. *J. Infect. Dis.* **122**:181–190.
- Gemski, P., Jr., A. Takeuchi, O. Washington, and S. B. Formal. 1972. Shigellosis due to *Shigella dysenteriae*. 1. Relative importance of mucosal invasion versus toxin production in pathogenesis. *J. Infect. Dis.* **126**:523–530.
- Houdouin, V., et al. 2004. A pediatric cluster of *Shigella dysenteriae* serotype 1 diarrhea with hemolytic uremic syndrome in 2 families from France. *Clin. Infect. Dis.* **38**:e96–e99.
- Inouye, S., and M. Inouye. 1985. Up-promoter mutations in the *lpp* gene of *Escherichia coli*. *Nucleic Acids Res.* **13**:3101–3110.
- Koprowski, H., et al. 2000. Attenuated *Shigella flexneri* 2a vaccine strain CVD 1204 expressing colonization factor antigen I and mutant heat-labile enterotoxin of enterotoxigenic *Escherichia coli*. *Infect. Immun.* **68**:4884–4892.
- Kotloff, K. L., et al. 2004. Deletion in the *Shigella* enterotoxin genes further attenuates *Shigella flexneri* 2a bearing guanine auxotrophy in a phase 1 trial of CVD 1204 and CVD 1208. *J. Infect. Dis.* **190**:1745–1754.
- Kotloff, K. L., et al. 2007. Safety and immunogenicity of CVD 1208S, a live, oral Δ *guaBA* Δ *sen* Δ *set* *Shigella flexneri* 2a vaccine grown on animal-free media. *Hum. Vaccin.* **3**:268–275.
- Kotloff, K. L., et al. 1999. Global burden of *Shigella* infections: implications for vaccine development and implementation of control strategies. *Bull. World Health Organ.* **77**:651–666.
- Levine, M. M., et al. 1973. Pathogenesis of *Shigella dysenteriae* 1 (Shiga) dysentery. *J. Infect. Dis.* **127**:261–270.
- Levine, M. M., K. L. Kotloff, E. M. Barry, M. F. Pasetti, and M. B. Szein. 2007. Clinical trials of *Shigella* vaccines: two steps forward and one step back on a long, hard road. *Nat. Rev. Microbiol.* **5**:540–553.
- Marcato, P., T. P. Griener, G. L. Mulvey, and G. D. Armstrong. 2005. Recombinant Shiga toxin B-subunit-keyhole limpet hemocyanin conjugate vaccine protects mice from shigatoxemia. *Infect. Immun.* **73**:6523–6529.

28. **Marques, L. R., M. A. Moore, J. G. Wells, I. K. Wachsmuth, and A. D. O'Brien.** 1986. Production of Shiga-like toxin by *Escherichia coli*. *J. Infect. Dis.* **154**:338–341.
29. **Mata, L. J., E. J. Gangarosa, A. Caceres, D. R. Perera, and M. L. Mejicanos.** 1970. Epidemic *Shiga* bacillus dysentery in Central America. I. Etiologic investigations in Guatemala, 1969. *J. Infect. Dis.* **122**:170–180.
30. **McCormick, B. A., S. P. Colgan, C. Delp-Archer, S. I. Miller, and J. L. Madara.** 1993. *Salmonella typhimurium* attachment to human intestinal epithelial monolayers: transcellular signalling to subepithelial neutrophils. *J. Cell Biol.* **123**:895–907.
31. **McCormick, B. A., M. I. Fernandez, A. M. Siber, and A. T. Maurelli.** 1999. Inhibition of *Shigella flexneri*-induced transepithelial migration of polymorphonuclear leucocytes by cadaverine. *Cell. Microbiol.* **1**:143–155.
32. **McKenzie, R., et al.** 2008. Safety and immunogenicity of WRSd1, a live attenuated *Shigella dysenteriae* type 1 vaccine candidate. *Vaccine* **26**:3291–3296.
33. **Mel, D., E. J. Gangarosa, M. L. Radovanovic, B. L. Arsic, and S. Litvinjenko.** 1971. Studies on vaccination against bacillary dysentery. 6. Protection of children by oral immunization with streptomycin-dependent *Shigella* strains. *Bull. World Health Organ.* **45**:457–464.
34. **Mel, D. M., A. L. Terzin, and L. Vuksic.** 1965. Studies on vaccination against bacillary dysentery. 3. Effective oral immunization against *Shigella flexneri* 2a in a field trial. *Bull. World Health Organ.* **32**:647–655.
35. **Mhalu, F. S., W. K. Moshi, and I. Mbaga.** 1984. A bacillary dysentery epidemic in Dar es Salaam, Tanzania. *J. Diarrhoeal Dis. Res.* **2**:217–222.
36. **Nakamura, K., and M. Inouye.** 1979. DNA sequence of the gene for the outer membrane lipoprotein of *E. coli*: an extremely AT-rich promoter. *Cell* **18**:1109–1117.
37. **Nataro, J. P., et al.** 1995. Identification and cloning of a novel plasmid-encoded enterotoxin of enteroinvasive *Escherichia coli* and *Shigella* strains. *Infect. Immun.* **63**:4721–4728.
38. **National Institute of Allergy and Infectious Diseases.** 2003. NIAID biodefense research agenda for category B and C priority pathogens. NIH publication no. 03-5315. National Institute of Allergy and Infectious Diseases, National Institutes of Health, U.S. Department of Health and Human Services, Bethesda, MD.
39. **Neill, R. J., P. Gemski, S. B. Formal, and J. W. Newland.** 1988. Deletion of the Shiga toxin gene in a chlorate-resistant derivative of *Shigella dysenteriae* type 1 that retains virulence. *J. Infect. Dis.* **158**:737–741.
40. **Noriega, F. R., F. M. Liao, S. B. Formal, A. Fasano, and M. M. Levine.** 1995. Prevalence of *Shigella* enterotoxin 1 among *Shigella* clinical isolates of diverse serotypes. *J. Infect. Dis.* **172**:1408–1410.
41. **Noriega, F. R., et al.** 1996. Engineered Δ guaB-A Δ virG *Shigella flexneri* 2a strain CVD 1205: construction, safety, immunogenicity, and potential efficacy as a mucosal vaccine. *Infect. Immun.* **64**:3055–3061.
42. **Noriega, F. R., G. Losonsky, J. Y. Wang, S. B. Formal, and M. M. Levine.** 1996. Further characterization of Δ aroA Δ virG *Shigella flexneri* 2a strain CVD 1203 as a mucosal *Shigella* vaccine and as a live-vector vaccine for delivering antigens of enterotoxigenic *Escherichia coli*. *Infect. Immun.* **64**:23–27.
43. **Oaks, E. V., M. E. Wingfield, and S. B. Formal.** 1985. Plaque formation by virulent *Shigella flexneri*. *Infect. Immun.* **48**:124–129.
44. **Parsot, C.** 2009. *Shigella* type III secretion effectors: how, where, when, for what purposes? *Curr. Opin. Microbiol.* **12**:110–116.
45. **Phalipon, A., and P. J. Sansonetti.** 2007. *Shigella*'s ways of manipulating the host intestinal innate and adaptive immune system: a tool box for survival? *Immunol. Cell Biol.* **85**:119–129.
46. **Pozsgay, V., et al.** 1999. Protein conjugates of synthetic saccharides elicit higher levels of serum IgG lipopolysaccharide antibodies in mice than do those of the O-specific polysaccharide from *Shigella dysenteriae* type 1. *Proc. Natl. Acad. Sci. U. S. A.* **96**:5194–5197.
47. **Rahaman, M. M., M. M. Khan, K. M. Aziz, M. S. Islam, and A. K. Kibriya.** 1975. An outbreak of dysentery caused by *Shigella dysenteriae* type 1 on a coral island in the Bay of Bengal. *J. Infect. Dis.* **132**:15–19.
48. **Sadorge, C., et al.** 2008. Phase 1 clinical trial of live attenuated *Shigella dysenteriae* type-1 Δ icsA Δ ent Δ fep Δ stxA:HgR oral vaccine SC599 in healthy human adult volunteers. *Vaccine* **26**:978–987.
49. **Sereny, B.** 1955. Experimental shigella keratoconjunctivitis: a preliminary report. *Acta Microbiol. Acad. Sci. Hung.* **2**:293–296.
50. **Shiga, K.** 1898. On the cause of dysentery in Japan. *Zentralbl. Bakteriol. Parasitenkd. Abt. 1* **23**:599.
51. **Taylor, D. N., et al.** 1993. Synthesis, characterization, and clinical evaluation of conjugate vaccines composed of the O-specific polysaccharides of *Shigella dysenteriae* type 1, *Shigella flexneri* type 2a, and *Shigella sonnei* (*Plesiomonas shigelloides*) bound to bacterial toxoids. *Infect. Immun.* **61**:3678–3687.
52. **Vargas, M., J. Gascon, M. T. Jimenez De Anta, and J. Vila.** 1999. Prevalence of *Shigella* enterotoxins 1 and 2 among *Shigella* strains isolated from patients with traveler's diarrhea. *J. Clin. Microbiol.* **37**:3608–3611.
53. **Venkatesan, M. M., et al.** 2002. Construction, characterization, and animal testing of WRSd1, a *Shigella dysenteriae* 1 vaccine. *Infect. Immun.* **70**:2950–2958.
54. **Venkatesan, M. M., and R. T. Ranallo.** 2006. Live-attenuated *Shigella* vaccines. *Expert Rev. Vaccines* **5**:669–686.

Editor: S. M. Payne