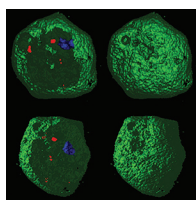




CONTENTS • JULY 2017 • VOLUME 85, NO. 7

COVER IMAGE



Cover photograph: The Nine Mile phase II strain of *Coxiella burnetii* expressing mCherry invades primary hemocytes expressing green fluorescent protein that were isolated from *Drosophila melanogaster* third-instar larvae. Isolated hemocytes were fixed, stained with DAPI (4',6-diamidino-2-phenylindole; blue), and imaged using a White Light Laser point scanning confocal microscope. Z-stacks of an individual cell were used for 3-dimensional reconstruction and cross-sectioning. (Images courtesy of Aoi Hiroyasu and David DeWitt, Washington State University, Pullman, WA.) (See related article at e00218-17.) (Copyright © 2017 American Society for Microbiology. All Rights Reserved.)

EDITORIALS

47 Years of IAI: a Glance in the Mirror and the Road Ahead e00256-17
Ferric C. Fang

Infection and Immunity Welcomes the New Microbiology e00255-17
Andreas J. Bäuml

SPOTLIGHT

Articles of Significant Interest Selected from This Issue by the Editors e00348-17

MINIREVIEW

Chemical Attenuation in the Development of a Whole-Organism Malaria Vaccine e00062-17
Amber I. Raja, Danielle I. Stanisic, Michael F. Good

MOLECULAR PATHOGENESIS

Infection of Hysterectomized Mice with *Chlamydia muridarum* and *Chlamydia trachomatis* e00197-17
Chunfu Yang, William M. Whitmire, Gail L. Sturdevant, Kevin Bock, Ian Moore, Harlan D. Caldwell

Association of Metal Homeostasis and (p)ppGpp Regulation in the Pathophysiology of *Enterococcus faecalis* e00260-17
C. Colomer-Winter, A. O. Gaca, J. A. Lemos

CELLULAR MICROBIOLOGY: PATHOGEN-HOST CELL MOLECULAR INTERACTIONS

Host Serine/Threonine Kinases mTOR and Protein Kinase C- α Promote InIB-Mediated Entry of *Listeria monocytogenes* e00087-17
Manmeet Bhalla, Daria Law, Georgina C. Dowd, Keith Ireton

Galectin-3 Is a Target for Proteases Involved in the Virulence of *Staphylococcus aureus* e00177-17
Jonas Elmwall, Jakub Kwiecinski, Manli Na, Abukar Ahmed Ali, Veronica Osla, Lindsey N. Shaw, Wanzhong Wang, Karin Sävman, Elisabet Josefsson, Johan Bylund, Tao Jin, Amanda Welin, Anna Karlsson

***Peptoanaerobacter stomatis* Primes Human Neutrophils and Induces Granule Exocytosis** e01043-16
E. Jimenez Flores, S. Tian, M. Sizova, S. S. Epstein, R. J. Lamont, S. M. Uriarte

BACTERIAL INFECTIONS

Propofol Sedation Exacerbates Kidney Pathology and Dissemination of Bacteria during *Staphylococcus aureus* Bloodstream Infections e00097-17

Lavanya Visvabharathy, Nancy E. Freitag

Position of O-Acetylation within the Capsular Repeat Unit Impacts the Biological Properties of Pneumococcal Serotypes 33A and 33F e00132-17

Brady L. Spencer, Jamil S. Saad, Anukul T. Shenoy, Carlos J. Orihuela, Moon H. Nahm

***Bacillus anthracis* Edema Toxin Increases Fractional Free Water and Sodium Reabsorption in an Isolated Perfused Rat Kidney Model** e00264-17

Dharmvir S. Jaswal, Xizhong Cui, Parizad Torabi-Parizi, Lernik Ohanjanian, Hannish Sampath-Kumar, Yvonne Fitz, Yan Li, Wanying Xu, Peter Q. Eichacker

HOST RESPONSE AND INFLAMMATION

Toll-Like Receptor 2 and Mincle Cooperatively Sense Corynebacterial Cell Wall Glycolipids e00075-17

Judith Schick, Philipp Etschel, Rebeca Bailo, Lisa Ott, Apoorva Bhatt, Bernd Lepenies, Carsten Kirschning, Andreas Burkovski, Roland Lang

Host and Bacterial Factors Control Susceptibility of *Drosophila melanogaster* to *Coxiella burnetii* Infection e00218-17

Reginaldo G. Bastos, Zachary P. Howard, Aoi Hiroyasu, Alan G. Goodman

FUNGAL AND PARASITIC INFECTIONS

Pulmonary Interleukin-17-Positive Lymphocytes Increase during *Pneumocystis murina* Infection but Are Not Required for Clearance of *Pneumocystis* e00434-16

Chiara Ripamonti, Lisa R. Bishop, Joseph A. Kovacs

LETTER TO THE EDITOR

Setting Sights on *Chlamydia* Immunity's Central Paradigm: Can We Hit a Moving Target? e00129-17

Rodolfo D. Vicetti Miguel, Nirk E. Quispe Calla, Thomas L. Cherpes

Reply to Vicetti Miguel et al., "Setting Sights on *Chlamydia* Immunity's Central Paradigm: Can We Hit a Moving Target?" e00223-17

Raymond M. Johnson, Robert C. Brunham