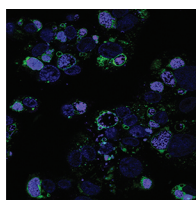




CONTENTS • MAY 2018 • VOLUME 86, NO. 5

COVER IMAGE



*Cover photograph:* Confocal immunofluorescence microscopy image depicting THP-1 macrophage-like cells infected with *Coxiella burnetii*, the intracellular bacterial agent of Q fever. During infection, *C. burnetii* (violet) replicates within a lysosome-like parasitophorous vacuole (PV), shown by CD63 labeling (green), within THP-1 cells (DAPI-stained DNA in blue). As shown in our related article, p62 localizes adjacent to the PV membrane and is involved in activating the Nrf2-Keap1 antioxidant pathway during infection. (See related article at e00608-17.) (Copyright © 2018 American Society for Microbiology. All Rights Reserved.)

SPOTLIGHT

**Article of Significant Interest Selected from This Issue by the Editor** e00197-18

MINIREVIEW

**Direct Manipulation of T Lymphocytes by Proteins of Gastrointestinal Bacterial Pathogens** e00683-17

*Robin L. Cassady-Cain, Jayne C. Hope, Mark P. Stevens*

MOLECULAR PATHOGENESIS

**Autoregulation and Virulence Control by the Toxin-Antitoxin System SavRS in *Staphylococcus aureus*** e00032-18

*Wen Wen, Banghui Liu, Lu Xue, Zhongliang Zhu, Liwen Niu, Baolin Sun*

***Salmonella*-Mediated Inflammation Eliminates Competitors for Fructose-Asparagine in the Gut** e00945-17

*Jikang Wu, Anice Sabag-Daigle, Mikayla A. Borton, Linnea F. M. Kop, Blake E. Szkoda, Brooke L. Deatherage Kaiser, Stephen R. Lindemann, Ryan S. Renslow, Siwei Wei, Carrie D. Nicora, Karl K. Weitz, Young-Mo Kim, Joshua N. Adkins, Thomas O. Metz, Prosper Boyaka, Venkat Gopalan, Kelly C. Wrighton, Vicki H. Wysocki, Brian M. M. Ahmer*

CELLULAR MICROBIOLOGY: PATHOGEN-HOST CELL MOLECULAR INTERACTIONS

**The Ethanolamine Permease EutH Promotes Vacuole Adaptation of *Salmonella enterica* and *Listeria monocytogenes* during Macrophage Infection** e00172-18

*Christopher J. Anderson, John Satkovich, Volkan K. Köseoğlu, Hervé Agaisse, Melissa M. Kendall*

***Coxiella burnetii* Subverts p62/Sequestosome 1 and Activates Nrf2 Signaling in Human Macrophages** e00608-17

*Caylin G. Winchell, Amanda L. Dragan, Katelynn R. Brann, Frances I. Onyilagha, Richard C. Kurten, Daniel E. Voth*

**Determinants of Raft Partitioning of the *Helicobacter pylori* Pore-Forming Toxin VacA** e00872-17

*Krishnan Raghunathan, Nora J. Foegeding, Anne M. Campbell, Timothy L. Cover, Melanie D. Ohi, Anne K. Kenworthy*

BACTERIAL INFECTIONS

**Two Phytoplasmas Elicit Different Responses in the Insect Vector *Euscelidius variegatus* Kirschbaum** e00042-18

*Luciana Galetto, Simona Abbà, Marika Rossi, Marta Vallino, Massimo Pesando, Nathalie Arricau-Bouvery, Marie-Pierre Dubrana, Walter Chitarra, Mattia Pegoraro, Domenico Bosco, Cristina Marzachi*

- Signaling by a Conserved Quorum Sensing Pathway Contributes to Growth *Ex Vivo* and Oropharyngeal Colonization of Human Pathogen Group A *Streptococcus*** e00169-18  
*Nishanth Makthal, Hackwon Do, Arica R. VanderWal, Randall J. Olsen, James M. Musser, Muthiah Kumaraswami*
- A Natural Mouse Model for *Neisseria* Colonization** e00839-17  
*Mancheong Ma, Daniel A. Powell, Nathan J. Weyand, Katherine A. Rhodes, María A. Rendón, Jeffrey A. Frelinger, Magdalene So*
- Virulence of the Melioidosis Pathogen *Burkholderia pseudomallei* Requires the Oxidoreductase Membrane Protein DsbB** e00938-17  
*Róisín M. McMahon, Philip M. Ireland, Derek S. Sarovich, Guillaume Petit, Christopher H. Jenkins, Mitali Sarkar-Tyson, Bart J. Currie, Jennifer L. Martin*
- Type IV Pili Promote *Clostridium difficile* Adherence and Persistence in a Mouse Model of Infection** e00943-17  
*Robert W. McKee, Naira Aleksanyan, Elizabeth M. Garrett, Rita Tamayo*
- Antibiotics with Interleukin-15 Inhibition Reduce Joint Inflammation and Bone Erosions but Not Cartilage Destruction in *Staphylococcus aureus*-Induced Arthritis** e00960-17  
*Berglind Bergmann, Pernilla Jirholt, Petra Henning, Catharina Lindholm, Claes Ohlsson, Iain B. McInnes, Ulf H. Lerner, Inger Gjertsson*
- HOST RESPONSE AND INFLAMMATION**
- Potential Role for Regulatory B Cells as a Major Source of Interleukin-10 in Spleen from *Plasmodium chabaudi*-Infected Mice** e00016-18  
*Xue Han, Ji Yang, Yitong Zhang, Yalin Zhang, Hongtao Cao, Yaming Cao, Zanmei Qi*
- Serum Amyloid P and IgG Exhibit Differential Capabilities in the Activation of the Innate Immune System in Response to *Bacillus anthracis* Peptidoglycan** e00076-18  
*Alanson W. Girton, Narcis I. Popescu, Ravi S. Keshari, Tarea Burgett, Florea Lupu, K. Mark Coggeshall*
- Anti-HMGB1 Neutralizing Antibody Attenuates Periodontal Inflammation and Bone Resorption in a Murine Periodontitis Model** e00111-18  
*Chiaki Yoshihara-Hirata, Keisuke Yamashiro, Tadashi Yamamoto, Hiroaki Aoyagi, Hidetaka Ideguchi, Mari Kawamura, Risa Suzuki, Mitsuki Ono, Hidenori Wake, Masahiro Nishibori, Shogo Takashiba*
- Interleukin-18 Is Critical for Mucosa-Associated Invariant T Cell Gamma Interferon Responses to *Francisella* Species *In Vitro* but Not *In Vivo*** e00117-18  
*Eric Jesteadt, Irma Zhang, Huifeng Yu, Anda Meierovics, Wei-Jen Chua Yankelevich, Siobhan Cowley*
- The *Chlamydia trachomatis* Plasmid and CT135 Virulence Factors Are Not Essential for Genital Tract Infection or Pathology in Female Pig-Tailed Macaques** e00121-18  
*Dorothy L. Patton, Yvonne C. Sweeney, Audrey E. Baldessari, Linda Cles, Laszlo Kari, Gail L. Sturdevant, Chunfu Yang, Harlan D. Caldwell*
- Salmonella enterica* Serovar Typhimurium Increases Functional PD-L1 Synergistically with Gamma Interferon in Intestinal Epithelial Cells via *Salmonella* Pathogenicity Island 2** e00674-17  
*J. M. Sahler, C. R. Eade, C. Altier, J. C. March*

- Fetal and Maternal Innate Immunity Receptors Have Opposing Effects on the Severity of Experimental Malaria in Pregnancy: Beneficial Roles for Fetus-Derived Toll-Like Receptor 4 and Type I Interferon Receptor 1** e00708-17  
*Lurdes Rodrigues-Duarte, Yash Pandya, Rita Neres, Carlos Penha-Gonçalves*
- Human Interleukin-32 $\gamma$  Plays a Protective Role in an Experimental Model of Visceral Leishmaniasis in Mice** e00796-17  
*Rodrigo Saar Gomes, Muriel Vilela Teodoro Silva, Jéssica Cristina dos Santos, Christine van Linge, Juliana Machado Reis, Mauro Martins Teixeira, Sebastião Alves Pinto, Miriam Leandro Dorta, Xiyuan Bai, Edward D. Chan, Charles A. Dinarello, Milton Adriano Pelli Oliveira, Leo A. B. Joosten, Fátima Ribeiro-Dias*
- Absence of Receptor Guanylyl Cyclase C Enhances Ileal Damage and Reduces Cytokine and Antimicrobial Peptide Production during Oral *Salmonella enterica* Serovar Typhimurium Infection** e00799-17  
*Shamik Majumdar, Vishwas Mishra, Somesh Nandi, Mudabir Abdullah, Anaxee Barman, Abinaya Raghavan, Dipankar Nandi, Sandhya S. Visweswariah*
- Thioester-Containing Proteins 2 and 4 Affect the Metabolic Activity and Inflammation Response in *Drosophila*** e00810-17  
*Upasana Shokal, Hannah Kopydlowski, Sneha Harsh, Ioannis Eleftherianos*
- Enterococcus faecalis* Demonstrates Pathogenicity through Increased Attachment in an Ex Vivo Polymicrobial Pulpal Infection** e00871-17  
*Wayne Nishio Ayre, Genevieve Melling, Camille Cuveillier, Madhan Natarajan, Jessica L. Roberts, Lucy L. Marsh, Christopher D. Lynch, Jean-Yves Maillard, Stephen P. Denyer, Alastair J. Sloan*
- Prostaglandin E<sub>2</sub> Induction Suppresses the Th1 Immune Responses in Cattle with Johne's Disease** e00910-17  
*Yamato Sajiki, Satoru Konnai, Tomohiro Okagawa, Asami Nishimori, Naoya Maekawa, Shinya Goto, Ryoyo Ikebuchi, Reiko Nagata, Satoko Kawaji, Yumiko Kagawa, Shinji Yamada, Yukinari Kato, Chie Nakajima, Yasuhiko Suzuki, Shiro Murata, Yasuyuki Mori, Kazuhiko Ohashi*
- FUNGAL AND PARASITIC INFECTIONS**
- Influence of *Eimeria falciformis* Infection on Gut Microbiota and Metabolic Pathways in Mice** e00073-18  
*Guangping Huang, Sixin Zhang, Chunxue Zhou, Xiaoli Tang, Chao Li, Chaoyue Wang, Xinming Tang, Jingxia Suo, Yonggen Jia, Saeed El-Ashram, Zhengquan Yu, Jianping Cai, Nishith Gupta, Xun Suo, Xianyong Liu*
- MICROBIAL IMMUNITY AND VACCINES**
- Evaluation of the Role of *stat3* in Antibody and T<sub>H</sub>17-Mediated Responses to Pneumococcal Immunization and Infection by Use of a Mouse Model of Autosomal Dominant Hyper-IgE Syndrome** e00024-18  
*Kristin Moffitt, Elaine Cheung, John Manis, Richard Malley*
- A *Plasmodium* Parasite with Complete Late Liver Stage Arrest Protects against Preerythrocytic and Erythrocytic Stage Infection in Mice** e00088-18  
*Ashley M. Vaughan, Brandon K. Sack, Dorender Dankwa, Nana Minkah, Thao Nguyen, Hayley Cardamone, Stefan H. I. Kappe*

**MyD88 Signaling in T Cells Is Critical for Effector CD4 T Cell Differentiation following a Transitional T Follicular Helper Cell Stage** e00791-17

*Rajakumar Mandraju, Aakanksha Jain, Yajing Gao, Zhiming Ouyang, Michael V. Norgard, Chandrashekhar Pasare*

**HOST-ASSOCIATED MICROBIAL COMMUNITIES**

**Chemotaxis Allows Bacteria To Overcome Host-Generated Reactive Oxygen Species That Constrain Gland Colonization** e00878-17

*Kieran D. Collins, Shuai Hu, Helmut Grasberger, John Y. Kao, Karen M. Ottemann*