

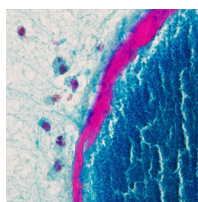


AMERICAN
SOCIETY FOR
MICROBIOLOGY

Infection and
Immunity®

CONTENTS • DECEMBER 2020 • VOLUME 88, NO. 12

COVER IMAGE



Cover photograph: An *in vitro* staphylococcal abscess community (SAC) exposed to neutrophil-like cells for 24 h. The fibrin pseudocapsule covering the *in vitro* SAC prevents neutrophil-like cells from reaching the bacteria within the SAC. Paraffin-embedded samples were stained with a Picro-Mallory trichrome stain, where the fibrin pseudocapsule stains magenta. The neutrophil-like cells (nuclei; purple/brown) can be observed to the left of the fibrin pseudocapsule, which surrounds the staphylococci (dark blue). (See related article in November 2020, vol. 88, e00293-20.) (Copyright © 2020 American Society for Microbiology. All Rights Reserved.)

EDITORIALS

Call for Original Research Papers for a Special Collection in *Infection and Immunity*: the Microbiome and Infection e00573-20

Manuela Raffatellu, Andreas J. Bäuml

Acknowledgment of *Ad Hoc* Reviewers e00608-20

Andreas J. Bäuml

SPOTLIGHT

Articles of Significant Interest in This Issue e00628-20

MINIREVIEW

Extracellular Vesicle Biogenesis and Functions in Gram-Positive Bacteria e00433-20

Paul Briaud, Ronan K. Carroll

MOLECULAR PATHOGENESIS

CsrA Supports both Environmental Persistence and Host-Associated Growth of *Acinetobacter baumannii* e00259-20

John M. Farrow III, Greg Wells, Samantha Palethorpe, Mark D. Adams, Everett C. Pesci

Conserved ESX-1 Substrates EspE and EspF Are Virulence Factors That Regulate Gene Expression e00289-20

Alexandra E. Chirakos, Kathleen R. Nicholson, Allison Huffman, Patricia A. Champion

***Neisseria meningitidis* Urethritis Outbreak Isolates Express a Novel Factor H Binding Protein Variant That Is a Potential Target of Group B-Directed Meningococcal (MenB) Vaccines** e00462-20

Yih-Ling Tzeng, Serena Giuntini, Zachary Berman, Soma Sannigrahi, Dan M. Granoff, David S. Stephens

The BB0345 Hypothetical Protein of *Borrelia burgdorferi* Is Essential for Mammalian Infection e00472-20

Danielle E. Graham, Ashley M. Groshong, Clay D. Jackson-Litteken, Brendan P. Moore, Melissa J. Caimano, Jon S. Blevins

CELLULAR MICROBIOLOGY: PATHOGEN-HOST CELL MOLECULAR INTERACTIONS

Identification of Autophagy-Inhibiting Factors of *Mycobacterium tuberculosis* by High-Throughput Loss-of-Function Screening e00269-20

Emily J. Strong, Kristen L. Jurcic Smith, Neeraj K. Saini, Tony W. Ng, Steven A. Porcelli, Sunhee Lee

- An *Ixodes scapularis* Protein Disulfide Isomerase Contributes to *Borrelia burgdorferi* Colonization of the Vector** e00426-20
Yongguo Cao, Connor Rosen, Gunjan Arora, Akash Gupta, Carmen J. Booth, Kristen E. Murfin, Jiri Cerny, Alejandro Marin Lopez, Yu-Min Chuang, Xiaotian Tang, Utpal Pal, Aaron Ring, Sukanya Narasimhan, Erol Fikrig
- Host and Bacterial Glycolysis during *Chlamydia trachomatis* Infection** e00545-20
Rachel J. Ende, Isabelle Derré
- Selective Inhibition of *Coxiella burnetii* Replication by the Steroid Hormone Progesterone** e00894-19
Zachary P. Howard, Anders Omsland
- BACTERIAL INFECTIONS**
- Success of *Escherichia coli* O25b:H4 Sequence Type 131 Clade C Associated with a Decrease in Virulence** e00576-20
Marion Duprilot, Alexandra Baron, François Blanquart, Sara Dion, Cassandra Pouget, Philippe Lettéron, Saskia-Camille Flament-Simon, Olivier Clermont, Erick Denamur, Marie-Hélène Nicolas-Chanoine
- HOST RESPONSE AND INFLAMMATION**
- Pseudomonas aeruginosa* Infection Impairs NKG2D-Dependent NK Cell Cytotoxicity through Regulatory T-Cell Activation** e00363-20
Mickael Vourc'h, Gaele David, Benjamin Gaborit, Alexis Broquet, Cedric Jacqueline, Tanguy Chaumette, Jocelyne Caillon, Antoine Roquilly, Christelle Retiere, Karim Asehnoune
- Secretion of c-di-AMP by *Listeria monocytogenes* Leads to a STING-Dependent Antibacterial Response during Enterocolitis** e00407-20
Alexander Louie, Varaang Bhandula, Daniel A. Portnoy
- Inhibition of Cathepsin K Alleviates Autophagy-Related Inflammation in Periodontitis-Aggravating Arthritis** e00498-20
Yuan Yue, Wuwei Yin, Qin Yang, Jie Ren, Liangyu Tan, Jiajia Wang, Jie Liu, Qiuyu Lu, Handong Ding, Weicheng Zhan, Liang Hao, Min Wang
- Progressive Control of *Streptococcus agalactiae*-Induced Innate Inflammatory Response Is Associated with Time Course Expression of MicroRNA-223 by Neutrophils** e00563-20
Maud Deny, Marta Romano, Olivier Denis, Georges Casimir, Mustapha Chamekh
- FUNGAL AND PARASITIC INFECTIONS**
- Nonlethal *Plasmodium yoelii* Infection Drives Complex Patterns of Th2-Type Host Immunity and Mast Cell-Dependent Bacteremia** e00427-20
Nora Céspedes, Erinn Donnelly, Sarah Garrison, Lori Haapanen, Judy Van De Water, Shirley Luckhart
- MICROBIAL IMMUNITY AND VACCINES**
- Cellular and Cytokine Responses in the Granulomas of Asymptomatic Cattle Naturally Infected with *Mycobacterium bovis* in Ethiopia** e00507-20
Begna Tulu, Henny M. Martineau, Aboma Zewude, Fekadu Desta, David A. Jolliffe, Markos Abebe, Taye Tolera Balcha, Mulugeta Belay, Adrian R. Martineau, Gobena Ameni

HOST-ASSOCIATED MICROBIAL COMMUNITIES

Impact of Diabetes on the Gut and Salivary IgA Microbiomes e00301-20

Eric L. Brown, Heather T. Essigmann, Kristi L. Hoffman, Noah W. Palm, Sarah M. Gunter, Joel M. Sederstrom, Joseph F. Petrosino, Goo Jun, David Aguilar, William B. Perkison, Craig L. Hanis, Herbert L. DuPont

Presence of Gastric Pepsinogen in the Trachea Is Associated with Altered Inflammation and Microbial Composition e00455-20

Usha Krishnan, Harveen Singh, Nicodemus Tedla, Steven T. Leach, Nadeem O. Kaakoush