

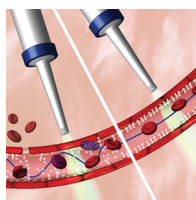


AMERICAN
SOCIETY FOR
MICROBIOLOGY

Infection and
Immunity®

CONTENTS • MARCH 2020 • VOLUME 88, NO. 3

COVER IMAGE



Cover photograph: The endothelial glycocalyx covers the luminal surface of blood vessels (white). In the buccal mucosa in pediatric *Plasmodium falciparum* malaria, we performed noninvasive imaging to allow for monitoring of the movement of red blood cells. Under normal conditions, the glycocalyx is impenetrable for red blood cells, but upon disease, the glycocalyx is shed, making room for cells in circulation. The so-called perfused boundary region increased in patients with malaria, and shed glycocalyx components were detected at increased amounts in plasma. Moreover, the noninvasive imaging allowed for the detection of sequestering parasites *in vivo* (purple) as well as perivascular hemorrhages. (See related article at e00679-19.) (Courtesy of Nanna Elmstedt Bild, Technical University of Denmark; reprinted with permission.)

SPOTLIGHT

Articles of Significant Interest in This Issue

e00030-20

MINIREVIEW

Unraveling the Role of MicroRNAs in *Mycobacterium tuberculosis* Infection and Disease: Advances and Pitfalls

e00649-19

Cintha Ruiz-Tagle, Rodrigo Naves, María Elvira Balcells

MOLECULAR PATHOGENESIS

The *Staphylococcus aureus* Cystine Transporters TcyABC and TcyP Facilitate Nutrient Sulfur Acquisition during Infection

e00690-19

Joshua M. Lensmire, Jack P. Dodson, Brian Y. Hsueh, Michael R. Wischer, Phillip C. Delekta, John C. Shook, Elizabeth N. Ottosen, Paige J. Kies, Janani Ravi, Neal D. Hammer

The Manganese-Responsive Transcriptional Regulator MumR Protects *Acinetobacter baumannii* from Oxidative Stress

e00762-19

Erin R. Green, Lillian J. Juttukonda, Eric P. Skaar

Mechanical Stimuli Affect *Escherichia coli* Heat-Stable Enterotoxin-Cyclic GMP Signaling in a Human Enteroid Intestine-Chip Model

e00866-19

Laxmi Sunuwar, Jianyi Yin, Magdalena Kasendra, Katia Karalis, James Kaper, James Fleckenstein, Mark Donowitz

Regulation of OmpA Translation and *Shigella dysenteriae* Virulence by an RNA Thermometer

e00871-19

Erin R. Murphy, Johanna Roßmanith, Jacob Sieg, Megan E. Fris, Hebaallaha Hussein, Andrew B. Kouse, Kevin Gross, Chunxi Zeng, Jennifer V. Hines, Franz Narberhaus, Peter W. Coschigano

The Invasion Plasmid Antigen J (IpaJ) from *Salmonella* Inhibits NF- κ B Activation by Suppressing I κ B α Ubiquitination

e00875-19

Qiuchun Li, Lijuan Xu, Chao Yin, Zijian Liu, Yang Li, Yu Yuan, Yachen Hu, Xinan Jiao

Twin-Arginine Translocation System Is Involved in *Citrobacter rodentium* Fitness in the Intestinal Tract

e00892-19

Tsuyoshi Otake, Mayuka Fujimoto, Yusuke Hoshino, Tomomi Ishihara, Takeshi Haneda, Nobuhiko Okada, Tsuyoshi Miki

***Vibrio cholerae* OmpR Represses the ToxR Regulon in Response to Membrane Intercalating Agents That Are Prevalent in the Human Gastrointestinal Tract** e00912-19
D. E. Kunkle, T. F. Bina, X. R. Bina, J. E. Bina

***Vibrio cholerae* Virulence Activator ToxR Regulates Manganese Transport and Resistance to Reactive Oxygen Species** e00944-19
Hang-hang Jiang, Yitian Zhou, Ming Liu, Jessie Larios-Valencia, Zachariah Lee, Hui Wang, Xing-Hua Gao, Jun Zhu

CELLULAR MICROBIOLOGY: PATHOGEN-HOST CELL MOLECULAR INTERACTIONS

Biogenesis of the Spacious *Coxiella*-Containing Vacuole Depends on Host Transcription Factors TFEB and TFE3 e00534-19
Bhavna Padmanabhan, Laura F. Fielden, Abderrahman Hachani, Patrice Newton, David R. Thomas, Hyun-Jung Cho, Chen Ai Khoo, Diana Stojanovski, Craig R. Roy, Nichollas E. Scott, Hayley J. Newton

Caspase-4 Mediates Restriction of *Burkholderia pseudomallei* in Human Alveolar Epithelial Cells e00868-19
Chanya Srisaowakarn, Matsayapan Pudla, Marisa Ponpuak, Pongsak Utaisincharoen

BACTERIAL INFECTIONS

Redundant and Cooperative Roles for *Yersinia pestis* Yop Effectors in the Inhibition of Human Neutrophil Exocytic Responses Revealed by Gain-of-Function Approach e00909-19
Amanda R. Pulsifer, Aruna Vashishta, Shane A. Reeves, Jennifer K. Wolfe, Samantha G. Palace, Megan K. Proulx, Jon Goguen, Sobha R. Bodduluri, Bodduluri Haribabu, Silvia M. Uriarte, Matthew B. Lawrenz

HOST RESPONSE AND INFLAMMATION

Immunosuppression in Cows following Intramammary Infusion of *Mycoplasma bovis* e00521-19
Satoshi Gondaira, Koji Nishi, Takahiro Tanaka, Takashi Yamamoto, Takanori Nebu, Reina Watanabe, Satoru Konnai, Tomohito Hayashi, Yoshio Kiku, Mariko Okamoto, Kazuya Matsuda, Masateru Koiwa, Hidetomo Iwano, Hajime Nagahata, Hidetoshi Higuchi

Survival of *Streptococcus suis* in Porcine Blood Is Limited by the Antibody- and Complement-Dependent Oxidative Burst Response of Granulocytes e00598-19
Viktoria Rungelrath, Sophie Öhlmann, Gottfried Alber, Wieland Schrödl, Maren von Köckritz-Blickwede, Nicole de Buhr, Alexander Martens, Christoph Georg Baums, Nicole Schütze

Whipworm Infection Promotes Bacterial Invasion, Intestinal Microbiota Imbalance, and Cellular Immunomodulation e00642-19
Julieta Schachter, Dayane Alvarinho de Oliveira, Camila Marques da Silva, Alba Cristina Miranda de Barros Alencar, Michelle Duarte, Matheus Müller Pereira da Silva, Ana Claudia de Paula Rosa Ignácio, Eduardo José Lopes-Torres

In Vivo Imaging of the Buccal Mucosa Shows Loss of the Endothelial Glycocalyx and Perivascular Hemorrhages in Pediatric *Plasmodium falciparum* Malaria e00679-19
Eric Lyimo, Lars Emil Haslund, Thomas Ramsing, Christian William Wang, Akinwale Michael Efunshile, Alphaxard Manjurano, Victor Makene, John Lusingu, Thor Grundtvig Theander, Jørgen Anders Lindholm Kurtzhals, Rasmus Paulsen, Casper Hempel

- PD-1 Expression on NK Cells in Malaria-Exposed Individuals Is Associated with Diminished Natural Cytotoxicity and Enhanced Antibody-Dependent Cellular Cytotoxicity** e00711-19
Jacqueline Moebius, Rajan Guha, Mary Peterson, Kaveh Abdi, Jeff Skinner, Shanping Li, Gunjan Arora, Boubacar Traore, Sumati Rajagopalan, Eric O. Long, Peter D. Crompton
- Profiles of Local and Systemic Inflammation in the Outcome of Treatment of Human Cutaneous Leishmaniasis Caused by *Leishmania (Viannia)*** e00764-19
Adriana Navas, Olga Fernández, Carolina Gallego-Marín, María del Mar Castro, Mariana Rosales-Chilama, Julieth Murillo, Alexandra Cossio, Diane McMahon-Pratt, Nancy Gore Saravia, María Adelaida Gómez
- B Cell Compartmentalization in Blood and Cerebrospinal Fluid of HIV-Infected Ugandans with Cryptococcal Meningitis** e00779-19
Samuel Okurut, David B. Meya, Freddie Bwanga, Joseph Olobo, Michael A. Eller, Fatim Cham-Jallow, Paul R. Bohjanen, Harsh Pratap, Brent E. Palmer, Katharine H. Hullsiek, Yukari C. Manabe, David R. Boulware, Edward N. Janoff
- Inflammatory Monocytes and Neutrophils Regulate *Streptococcus suis*-Induced Systemic Inflammation and Disease but Are Not Critical for the Development of Central Nervous System Disease in a Mouse Model of Infection** e00787-19
Jean-Philippe Auger, Serge Rivest, Marie-Odile Benoit-Biancamano, Mariela Segura, Marcelo Gottschalk
- Difference in Strain Pathogenicity of Septicemic *Yersinia pestis* Infection in a TLR2^{-/-} Mouse Model** e00792-19
Kyle L. O'Donnell, Peter L. Knopick, Riley Larsen, Sanghita Sarkar, Matthew L. Nilles, David S. Bradley
- Elevated Levels of Interleukin-27 in Early Life Compromise Protective Immunity in a Mouse Model of Gram-Negative Neonatal Sepsis** e00828-19
Brittany G. Seman, Jordan K. Vance, Travis W. Rawson, Michelle R. Witt, Annalisa B. Huckaby, Jessica M. Povroznik, Shelby D. Bradford, Mariette Barbier, Cory M. Robinson
- Proprotein Convertase Subtilisin/Kexin Type 9 (PCSK9) Is Not Induced in Artificial Human Inflammation and Is Not Correlated with Inflammatory Response** e00842-19
Matthias Wolfgang Heinzl, Michael Resl, Carmen Klammer, Margot Egger, Benjamin Dieplinger, Martin Clodi
- FUNGAL AND PARASITIC INFECTIONS**
- Pathways That Synthesize Phosphatidylethanolamine Impact *Candida albicans* Hyphal Length and Cell Wall Composition through Transcriptional and Posttranscriptional Mechanisms** e00480-19
Robert N. Tams, Andrew S. Wagner, Joseph W. Jackson, Eric R. Gann, Timothy E. Sparer, Todd B. Reynolds
- Interleukin-4 Signaling Plays a Major Role in Urogenital Schistosomiasis-Associated Bladder Pathogenesis** e00669-19
Evaristus C. Mbanefo, Chi-Ling Fu, Christina P. Ho, Loc Le, Kenji Ishida, Olfat Hammam, Michael H. Hsieh
- Contribution of Laccase Expression to Immune Response against *Cryptococcus gattii* Infection** e00712-19
Adithap Hansakon, Popchai Ngamskulrungrroj, Pornpimon Angkasekwinai

MICROBIAL IMMUNITY AND VACCINES

Vaccine-Specific Immune Responses against *Mycobacterium ulcerans* Infection in a Low-Dose Murine Challenge Model e00753-19

Kirstie M. Mangas, Andrew H. Buultjens, Jessica L. Porter, Sarah L. Baines, Estelle Marion, Laurent Marsollier, Nicholas J. Tobias, Sacha J. Pidot, Kylie M. Quinn, David J. Price, Katherine Kedzierska, Weiguang Zeng, David C. Jackson, Brendon Y. Chua, Timothy P. Stinear

Major Histocompatibility Complex Class II-Restricted, CD4⁺ T Cell-Dependent and -Independent Mechanisms Are Required for Vaccine-Induced Protective Immunity against *Coxiella burnetii* e00824-19

Lindsey Ledbetter, Rama Cherla, Catherine Chambers, Yan Zhang, William J. Mitchell, Guoquan Zhang

***Clostridioides difficile* Infection Induces an Inferior IgG Response to That Induced by Immunization and Is Associated with a Lack of T Follicular Helper Cell and Memory B Cell Expansion** e00829-19

Souwelimatou Amadou Amani, Tyler Shadid, Jimmy D. Ballard, Mark L. Lang

HOST-ASSOCIATED MICROBIAL COMMUNITIES

Evasion of Innate Lymphoid Cell-Regulated Gamma Interferon Responses by *Chlamydia muridarum* To Achieve Long-Lasting Colonization in Mouse Colon e00798-19

John J. Koprivsek, Ying He, Chenchen Song, Nu Zhang, Alexei Tumanov, Guangming Zhong

The Cryptic Plasmid Improves *Chlamydia* Fitness in Different Regions of the Gastrointestinal Tract e00860-19

Jingyue Ma, Conghui He, Zhi Huo, Ying Xu, Bernard Arulanandam, Quanzhong Liu, Guangming Zhong