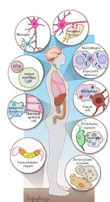




CONTENTS • JULY 2020 • VOLUME 88, NO. 7

COVER IMAGE



Cover photograph: The emerging roles of trophocytosis (cell nibbling) in normal physiology, infection, and disease. In the central nervous system, microglia use trophocytosis to remodel neuronal synapses, and the parasite *Naegleria fowleri* kills human cells by using trophocytosis. T cells, and other immune cells, take bites out of a variety of different human cells. Bacteria such as *Francisella tularensis* exploit trophocytosis to spread between human macrophages. *Entamoeba histolytica* kills human intestinal epithelial cells by performing trophocytosis. Macrophages can perform trophocytosis to kill antibody-opsonized cancer cells. Neutrophils kill *Trichomonas vaginalis* by using trophocytosis. Primordial germ cells in *Caenorhabditis elegans* are nibbled by endodermal cells during development. *Dictyostelium caveatum* kills other *Dictyostelium* species

by performing trophocytosis. (See related article at e00930-19.) (Courtesy of Anita Impagliazzo, reproduced with permission.)

EDITORIAL

Early-Career Scientists Shaping the New Microbiology e00129-20
Andreas J. Bäumlner, Anthony R. Richardson, Karen M. Ottemann

MINIREVIEWS

NOD1 and NOD2 Activation by Diverse Stimuli: a Possible Role for Sensing Pathogen-Induced Endoplasmic Reticulum Stress e00898-19
Sharon K. Kuss-Duerkop, A. Marijke Keestra-Gounder

Illuminating Macrophage Contributions to Host-Pathogen Interactions *In Vivo*: the Power of Zebrafish e00906-19
Emily E. Rosowski

For the Greater (Bacterial) Good: Heterogeneous Expression of Energetically Costly Virulence Factors e00911-19
Kimberly M. Davis

Fighting Persistence: How Chronic Infections with *Mycobacterium tuberculosis* Evade T Cell-Mediated Clearance and New Strategies To Defeat Them e00916-19
Laurisa Ankley, Sean Thomas, Andrew J. Olive

Outer Membrane Lipid Secretion and the Innate Immune Response to Gram-Negative Bacteria e00920-19
Nicole P. Giordano, Melina B. Cian, Zachary D. Dalebroux

Fitness Trade-Offs Resulting from Bacteriophage Resistance Potentiate Synergistic Antibacterial Strategies e00926-19
Mihnea R. Mangalea, Breck A. Duerkop

Regulation of Virulence by Two-Component Systems in Pathogenic *Burkholderia* e00927-19
Matthew M. Schaefer

Biting Off What Can Be Chewed: Trophocytosis in Health, Infection, and Disease e00930-19
Akhila Bettadapur, Hannah W. Miller, Katherine S. Ralston

Two-Component Signal Transduction Systems in the Human Pathogen *Streptococcus agalactiae* e00931-19
Lamar Thomas, Laura Cook

***Staphylococcus aureus* Osteomyelitis: Bone, Bugs, and Surgery** e00932-19
Kenneth L. Urish, James E. Cassat

- From Nursery to Nursing Home: Emerging Concepts in *Clostridioides difficile* Pathogenesis** e00934-19
Alexander B. Smith, Joshua Soto Ocana, Joseph P. Zackular
- Gut Epithelial Metabolism as a Key Driver of Intestinal Dysbiosis Associated with Noncommunicable Diseases** e00939-19
Catherine D. Shelton, Mariana X. Byndloss
- Bacterial Defense Systems against the Neutrophilic Oxidant Hypochlorous Acid** e00964-19
Sadia Sultana, Alessandro Foti, Jan-Ulrik Dahl
- MOLECULAR PATHOGENESIS**
- Mycoplasma hyopneumoniae* Inhibits Porcine Beta-Defensin 2 Production by Blocking the Unfolded Protein Response To Facilitate Epithelial Adhesion and Infection** e00164-20
Qiao Pan, Xiumei Wang, Tong Liu, Ying Yu, Lu Li, Rui Zhou, Ganwu Li, Jiuqing Xin
- Small Noncoding RNA CjNC110 Influences Motility, Autoagglutination, AI-2 Localization, Hydrogen Peroxide Sensitivity, and Chicken Colonization in *Campylobacter jejuni*** e00245-20
Amanda J. Kreuder, Brandon Ruddell, Kathy Mou, Alan Hassall, Qijing Zhang, Paul J. Plummer
- Role of the ESCRT Pathway in Laccase Trafficking and Virulence of *Cryptococcus neoformans*** e00954-19
Yoon-Dong Park, Shu Hui Chen, Emma Camacho, Arturo Casadevall, Peter R. Williamson
- CELLULAR MICROBIOLOGY: PATHOGEN-HOST CELL MOLECULAR INTERACTIONS**
- Opsonophagocytosis of *Chlamydia pneumoniae* by Human Monocytes and Neutrophils** e00087-20
Mads Lausen, Mathilde Selmar Pedersen, Nareen Sherzad Kader Rahman, Liv Therese Holm-Nielsen, Faduma Yahya Mohamed Farah, Gunna Christiansen, Svend Birkelund
- Coxiella burnetii* Requires Host Eukaryotic Initiation Factor 2 α Activity for Efficient Intracellular Replication** e00096-20
Katelynn R. Brann, Marissa S. Fullerton, Daniel E. Voth
- Achromobacter xylosoxidans* Cellular Pathology Is Correlated with Activation of a Type III Secretion System** e00136-20
Adam M. Pickrum, Orlando DeLeon, Aaron Dirck, Maxx H. Tessmer, Molly O. Riegert, Julie A. Biller, Nathan A. Ledebor, John R. Kirby, Dara W. Frank
- Differential Regulation of L-Arginine Metabolism through Arginase 1 during Infection with *Leishmania mexicana* Isolates Obtained from Patients with Localized and Diffuse Cutaneous Leishmaniasis** e00963-19
Arturo A. Wilkins-Rodríguez, Armando Pérez-Torres, Alma R. Escalona-Montaño, Laila Gutiérrez-Kobeh
- BACTERIAL INFECTIONS**
- Histidine Utilization Is a Critical Determinant of *Acinetobacter* Pathogenesis** e00118-20
Zachery R. Lonergan, Lauren D. Palmer, Eric P. Skaar

- A CpxR-Regulated *zapD* Gene Involved in Biofilm Formation of Uropathogenic *Proteus mirabilis*** e00207-20
Hong-Han Chen, Chien-Che Chang, Yu-Han Yuan, Shwu-Jen Liaw
- Contribution of Severe Dental Caries Induced by *Streptococcus mutans* to the Pathogenicity of Infective Endocarditis** e00897-19
Ryota Nomura, Saaya Matayoshi, Masatoshi Otsugu, Takahiro Kitamura, Noboru Teramoto, Kazuhiko Nakano
- HOST RESPONSE AND INFLAMMATION**
- Salmonella enterica* Infection of Murine and Human Enteroid-Derived Monolayers Elicits Differential Activation of Epithelium-Intrinsic Inflammasomes** e00017-20
Mayumi K. Holly, Xiao Han, Edward J. Zhao, Shauna M. Crowley, Joannie M. Allaire, Leigh A. Knodler, Bruce A. Vallance, Jason G. Smith
- Depletion of Alveolar Macrophages Increases Pulmonary Neutrophil Infiltration, Tissue Damage, and Sepsis in a Murine Model of *Acinetobacter baumannii* Pneumonia** e00128-20
Hui Ham Lee, Lilit Aslanyan, Arjun Vidyasagar, Melissa B. Brennan, Maxine S. Tauber, Maria A. Carrillo-Sepulveda, Michael R. Does, Nathan W. Rigel, Luis R. Martinez
- Innate Lymphoid Cells Are Required for Endometrial Resistance to *Chlamydia trachomatis* Infection** e00152-20
Hong Xu, Xin Su, Yujie Zhao, Lingli Tang, Jianlin Chen, Guangming Zhong
- Cathelicidins Mitigate *Staphylococcus aureus* Mastitis and Reduce Bacterial Invasion in Murine Mammary Epithelium** e00230-20
Paloma Araujo Cavalcante, Cameron G. Knight, Yi-Lin Tan, Ana Paula Alves Monteiro, Herman W. Barkema, Eduardo R. Cobo
- FUNGAL AND PARASITIC INFECTIONS**
- MicroRNA-155 Deficiency Exacerbates *Trypanosoma cruzi* Infection** e00948-19
Bijay K. Jha, Sanjay Varikuti, Gabriella R. Seidler, Greta Volpedo, Abhay R. Satoskar, Bradford S. McGwire