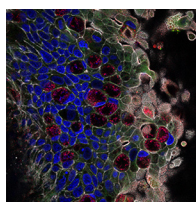




CONTENTS • SEPTEMBER 2020 • VOLUME 88, NO. 9

COVER IMAGE



Cover photograph: *Chlamydia trachomatis* staining in primary human fallopian tube epithelial cells. Cells were isolated from discarded fallopian tubes after elective salpingectomies, expanded in a growth factor-rich media, and subsequently polarized on polytetrafluoroethylene porous membranes in an air-liquid interface. Polarized cells were infected with a low passage clinical isolate of *C. trachomatis*, which was transformed to express mCherry. Cells were fixed at 48 hours postinfection and stained to reveal nuclei (Hoechst—blue), actin (phalloidin—white), cilia (alpha tubulin—green), and chlamydial LPS (red). The 3D nature of the polarized cells allowed for visualization of cilia, nuclei, and chlamydial inclusions in different cells in a single plane. (See related article at e00105-20.) (Copyright © 2020 American Society for Microbiology. All Rights Reserved.)

SPOTLIGHT

Article of Significant Interest in This Issue

e00439-20

MINIREVIEWS

Neural Immune Communication in the Control of Host-Bacterial Pathogen Interactions in the Gastrointestinal Tract

e00928-19

Valerie Ramirez, Samantha Swain, Kaitlin Murray, Colin Reardon

Can the Cecal Ligation and Puncture Model Be Repurposed To Better Inform Therapy in Human Sepsis?

e00942-19

John C. Alverdy, Robert Keskey, Renee Thewissen

MOLECULAR PATHOGENESIS

The Ethanolamine-Sensing Transcription Factor EutR Promotes Virulence and Transmission during *Citrobacter rodentium* Intestinal Infection

e00137-20

Carol A. Rowley, Amber B. Sauder, Melissa M. Kendall

A Small Membrane Stabilizing Protein Critical to the Pathogenicity of *Staphylococcus aureus*

e00162-20

Seána Duggan, Maisem Laabei, Alaa Abdulaziz Alnahari, Eóin C. O'Brien, Keenan A. Lacey, Leann Bacon, Kate Heesom, Chih-Lung Fu, Michael Otto, Eric Skaar, Rachel M. McLoughlin, Ruth C. Massey

CELLULAR MICROBIOLOGY: PATHOGEN-HOST CELL MOLECULAR INTERACTIONS

Differential Interactions of Serum and Bronchoalveolar Lavage Fluid Complement Proteins with Conidia of Airborne Fungal Pathogen *Aspergillus fumigatus*

e00212-20

Sarah Sze Wah Wong, Irene Daniel, Jean-Pierre Gangneux, Jeya Maheshwari Jayapal, H el ene Guegan, Sarah Delli ere, Prajna Lalitha, Rajashri Shende, Taruna Madan, Jagadeesh Bayry, J. I naki Gujjarro, Dharmalingam Kuppamuthu, Vishukumar Aimanianda

BACTERIAL INFECTIONS

Aggregative Adherence Fimbriae II of Enteroaggregative *Escherichia coli* Are Required for Adherence and Barrier Disruption during Infection of Human Colonoids

e00176-20

Laura A. Gonyar, Rachel M. Smith, Jorge A. Giron, Nicholas C. Zachos, Fernando Ruiz-Perez, James P. Nataro

Scnn1b-Transgenic BALB/c Mice as a Model of *Pseudomonas aeruginosa* Infections of the Cystic Fibrosis Lung

e00237-20

Kristen J. Brao, Brendan P. Wille, Joshua Lieberman, Robert K. Ernst, Mark E. Shirtliff, Janette M. Harro

- Nontypeable *Haemophilus influenzae* Type IV Pilus Mediates Augmented Adherence to Rhinovirus-Infected Human Airway Epithelial Cells** e00248-20
Stephen L. Toone, Michelle Ratkiewicz, Laura A. Novotny, Binh L. Phong, Lauren O. Bakaletz
- Distinct Morphological Fates of Uropathogenic *Escherichia coli* Intracellular Bacterial Communities: Dependency on Urine Composition and pH** e00884-19
Gregory Iosifidis, Iain G. Duggin
- HOST RESPONSE AND INFLAMMATION**
- The Ubiquitin-Modifying Enzyme A20 Terminates C-Type Lectin Receptor Signals and Is a Suppressor of Host Defense against Systemic Fungal Infection** e00048-20
Jie Liang, Junyi J. Zhang, Hsin-I Huang, Masashi Kanayama, Nourhan Youssef, Yingai J. Jin, Estefany Y. Reyes, Clare L. Abram, Shigao Yang, Clifford A. Lowell, Donghai Wang, Ling Shao, Mari L. Shinohara, Jennifer Y. Zhang, Gianna Elena Hammer
- A 20-Mer Peptide Derived from the Lectin Domain of SP-A2 Decreases Tumor Necrosis Factor Alpha Production during *Mycoplasma pneumoniae* Infection** e00099-20
Usir S. Younis, Hong Wei Chu, Monica Kraft, Julie G. Ledford
- Human Fallopian Tube Epithelial Cell Culture Model To Study Host Responses to *Chlamydia trachomatis* Infection** e00105-20
Bryan E. McQueen, Amy Kiatthanapaiboon, M. Leslie Fulcher, Mariam Lam, Kate Patton, Emily Powell, Avinash Kollipara, Victoria Madden, Robert J. Suchland, Priscilla Wyrick, Catherine M. O'Connell, Boris Reidel, Mehmet Kesimer, Scott H. Randell, Toni Darville, Uma M. Nagarajan
- Activation of the NLRP3 Inflammasome by Particles from the *Echinococcus granulosus* Laminated Layer** e00190-20
Cecilia Casaravilla, Álvaro Pittini, Dominik Ruckerl, Judith E. Allen, Álvaro Díaz