

Supplemental Material

Supplemental figures

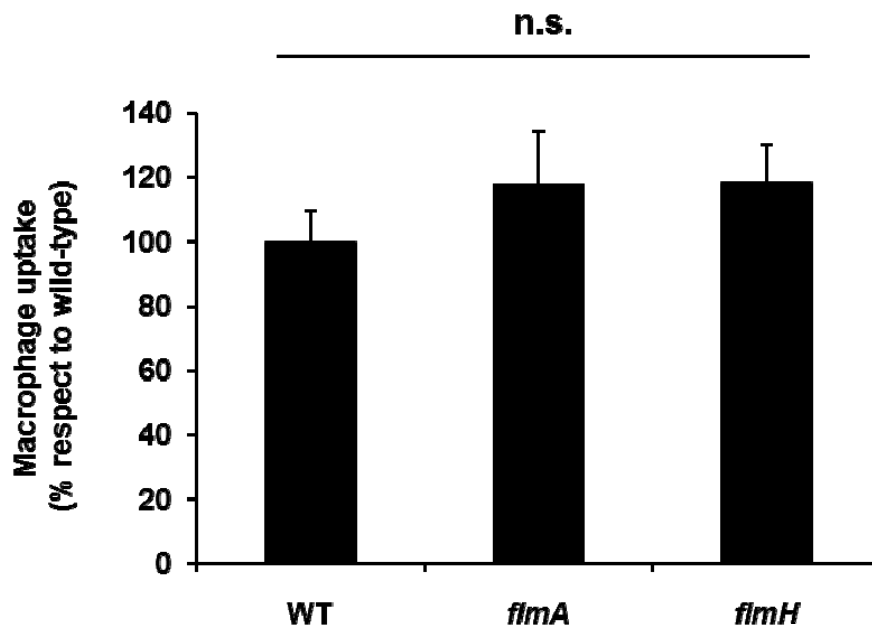


Figure S1. Uptake properties of wild-type (WT), *fimA*, and *fimH* mutant *Salmonella* in macrophages. Uptake was determined 20 min after infection of the macrophages as described in the Materials and Methods. For each mutant, the percentage uptake relative to that of the wild-type strain is presented. Values represent the mean of three independent experiments \pm SD. n.s., not significant.

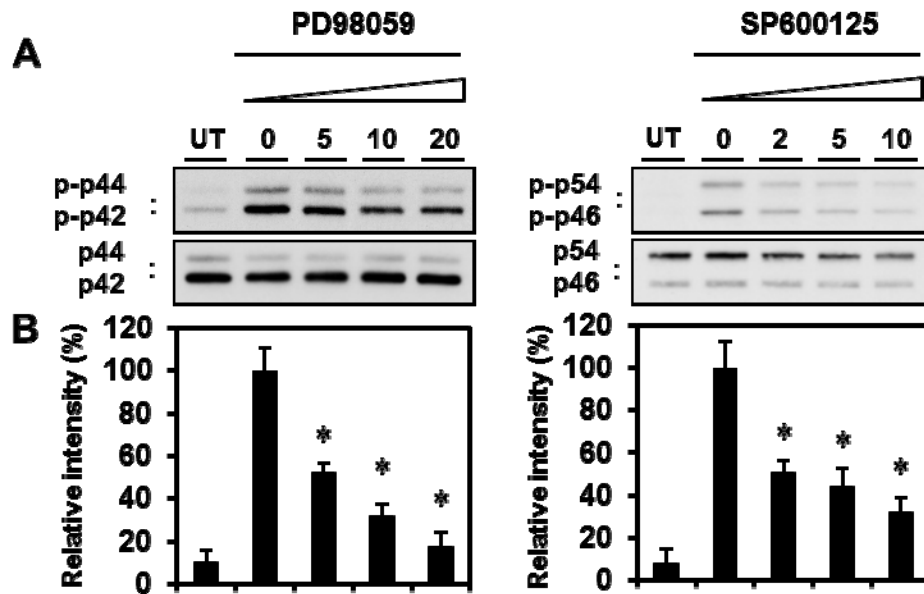


Figure S2. Effects of inhibitors of ERK (PD98059) and JNK (SP600125) on ERK and JNK MAPK phosphorylation in FimH-treated macrophages. Macrophages were treated with FimH (2.5 $\mu\text{g}/\text{mL}$) in the presence of the indicated concentrations of inhibitors or 0.1% dimethyl sulfoxide (solvent control). After 2.5 h treatment, cytosolic extracts were prepared and analyzed using the indicated antibodies. (A) Image of the original blots. After analysis with anti-phospho-ERK and phospho-JNK (top), the membranes were stripped and re-probed with an antibody to ERK or JNK (bottom). (B) Densitometric analysis of the amounts of phospho-ERK and phospho-JNK normalized to the amounts of ERK (p44) and JNK (p54) in the same samples. Graphs show values as percentages compared with untreated macrophages. *, $p < 0.001$, significantly different from FimH-treated macrophages in the absence of inhibitors. UT, untreated.